

# M/s Mahalaxmi Tube well

Rajnendra Nagar Pukhrayan Kanpur 9935299290

## Geophysical Well Logging Report

Ref No – 07/27

Date -03/07/2023

Site Location : - Ibrahimpur Bamger 2nd Gugrapur Kannauj

District : - Kannauj

Logged Depth : - 198 M BGL

Date of Logging : - 02/06/2023


Types of Log : - S.P & N16, N-64 LAT

Logger used : - IGIS

The following permeable granular zones have been deciphered with the help of Electrical Logger

Sr NO	Depth Range From M.B.G.L	Depth Range M.B.G.L.	Thickness Mtr.	Inferred Lithology	Quality of G.W.
01	35	56	21	Fine to Medium Sand	Good
02	60	65	05		

Note- All zones are intermixed fine bands of kankar. Quality of the formation water is deteriorating from 79 Mbgl to till logged depth.

  
M/s Mahalaxmi Tube Well

Rho a

N16(SN)

N64(LN)

LAT

DATE

TIME

DEPTH

WELL

LOG NO.

LOG NAME

LOG DATE

LOG TIME

LOG DEPTH

LOG WELL

LOG LOG NO.

LOG LOG NAME

LOG LOG DATE

LOG LOG TIME

LOG LOG DEPTH

LOG LOG WELL

LOG LOG LOG NO.

LOG LOG LOG NAME

LOG LOG LOG DATE

LOG LOG LOG TIME

LOG LOG LOG DEPTH

LOG LOG LOG WELL

LOG LOG LOG LOG NO.

LOG LOG LOG LOG NAME

LOG LOG LOG LOG DATE

LOG LOG LOG LOG TIME

LOG LOG LOG LOG DEPTH

LOG LOG LOG LOG WELL

LOG LOG LOG LOG LOG NO.

LOG LOG LOG LOG LOG NAME

LOG LOG LOG LOG LOG DATE

LOG LOG LOG LOG LOG TIME

LOG LOG LOG LOG LOG DEPTH

LOG LOG LOG LOG LOG WELL

LOG LOG LOG LOG LOG LOG NO.

LOG LOG LOG LOG LOG LOG NAME

LOG LOG LOG LOG LOG LOG DATE

LOG LOG LOG LOG LOG LOG TIME

LOG LOG LOG LOG LOG LOG DEPTH

LOG LOG LOG LOG LOG LOG WELL

LOG LOG LOG LOG LOG LOG LOG NO.

LOG LOG LOG LOG LOG LOG LOG NAME

LOG LOG LOG LOG LOG LOG LOG DATE

LOG LOG LOG LOG LOG LOG LOG TIME

LOG LOG LOG LOG LOG LOG LOG DEPTH

LOG LOG LOG LOG LOG LOG LOG WELL

LOG LOG LOG LOG LOG LOG LOG LOG NO.

LOG LOG LOG LOG LOG LOG LOG LOG NAME

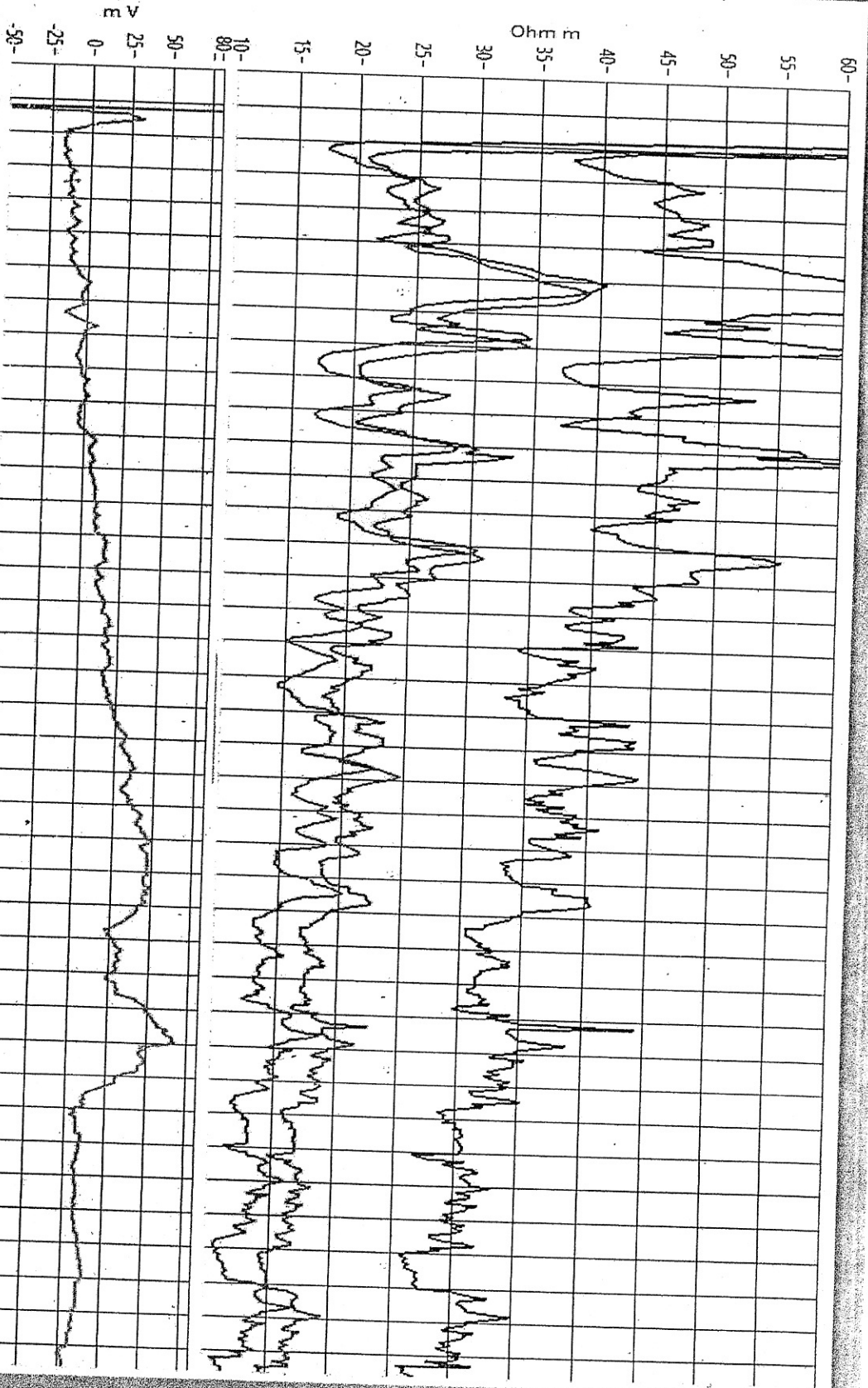
LOG LOG LOG LOG LOG LOG LOG LOG DATE

LOG LOG LOG LOG LOG LOG LOG LOG TIME

LOG LOG LOG LOG LOG LOG LOG LOG DEPTH

SP

E



Depth (m)

5 10 15 20 25 30 35 40 45 50 55 60 65 70 75 80 85 90 95 100 105 110 115 120 125 130 135 140 145 150 155 160 165 170 175 180 185 190