

GEO INSTRUMENTS & TECHNIC'S

(A Division of Geophysical Exploration and Instrumentation)

Sales & Service Dealer : Uptron Borehole logging system, UPTRON INDIA LTD., LUCKNOW

Ref:GIT:UP:23-24:LS: 769

Dated: 19-12-2023

GEOPHYSICAL BOREHOLE LOGGING REPORT

Site: Purey Basau
Block: Gaura
District: Pratapgarh
State: Uttar Pradesh
Logging depth: 248.0 m bgl
Date of logging: 17-12-2023
Rm - 10.0 Ω m Rw - 14.0 Ω m

Latitude: 25.763353

Longitude: 82.057884


Borewell Drilled By: M/s Kalpataru Power International Limited,
Pratapgarh, Uttar Pradesh.

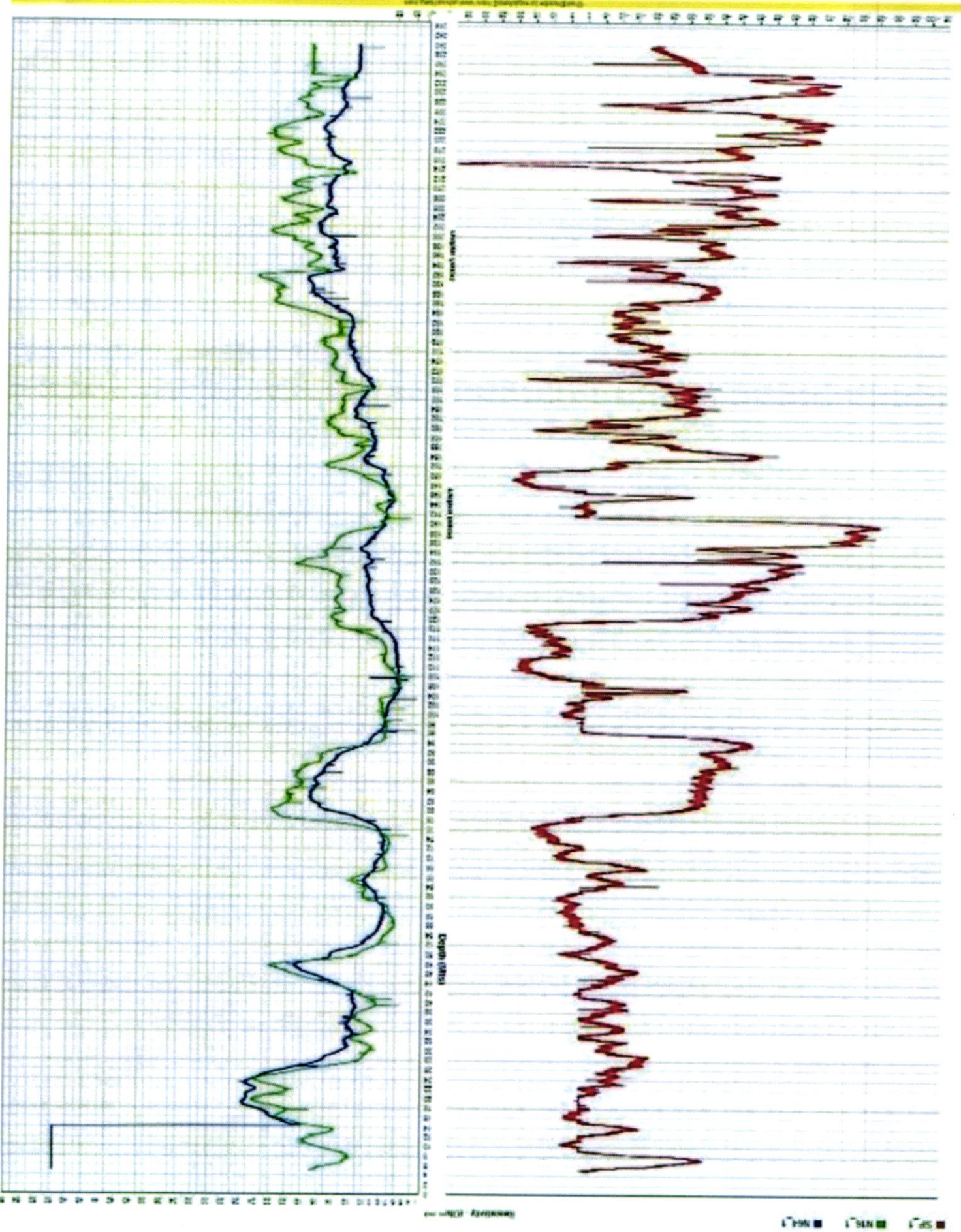
Based on the interpretation of Self Potential (SP), Short Normal (N-16"), Long Normal (N-64") and Lateral 6' Geophysical Logs, following informations/granular zones have been deciphered with respect to Salinity only:

Sl. No.	Depth Range (m bgl)	Thickness (meters)	Remarks (Quality of aquifer water)
1.	16 - 28	12	Good
2.	42 - 49	07	Good to Moderate
3.	78 - 93	15	Moderate
4.	184 - 191	07	Moderate
5.	200 - 204	04	Moderate to Marginal
6.	216 - 220	04	Marginal

- Note: 1. Fine bands of kankar are intermixed with almost all the zones.
2. Zone Sl. No. 3 is highly intermixed with fine bands of kankar.
3. Please ensure pre-monsoon water level before lower the well assembly.

For Geo Instruments & Technic's


(S. Shukla)

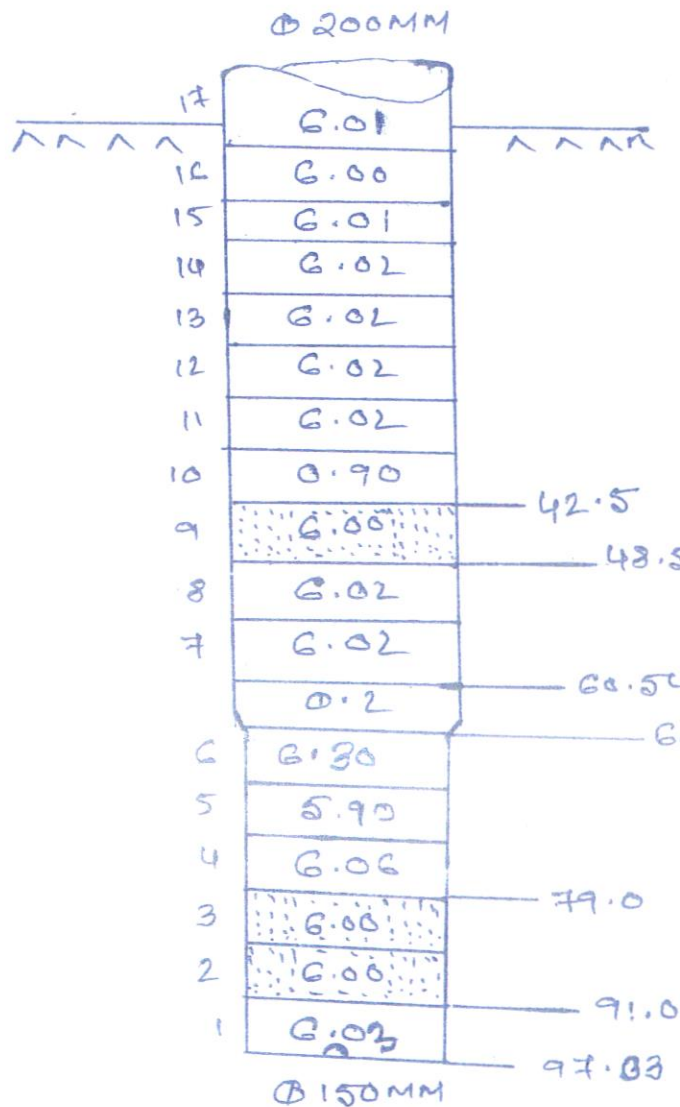


MURBY BASAHU WATER Supply Scheme.

REQ LPM = 500

ASS. SIZE = $\phi 200 \times 150$ MM

BORR SIZE = $\phi 500 \times 450$ MM



LOGGING REPORT

- ① 42-49 (7M) - GOOD TO MODERATE.
- ② 78-93 (15M) - MODERATE.
- ③ 184-171 (7M) - MODERATE.

MS RING $\phi 150$ MM - 05 NOS

MS RING $\phi 200$ MM - 10 NOS

Bail plug $\phi 150$ MM - 01 NOS

Well cap $\phi 200$ MM - 01 NOS

Reducer $\phi 200 \times 150 \rightarrow 01$ NOS

MS J clamp $\phi 200 \rightarrow 01$ NOS

Assembly $\phi 200 \rightarrow 01$ NOS

Support frame

MS ERW plain pipe $\phi 200$ $\Rightarrow 55.04$ Mth.

MS ERW plain pipe $\phi 150$ $\Rightarrow 24.83$ Mth.

MS ERW Slotted pipe $\phi 200$ $\Rightarrow 6.00$ Mth.

MS ERW Slotted pipe $\phi 150$ $\Rightarrow 12$ Mth.

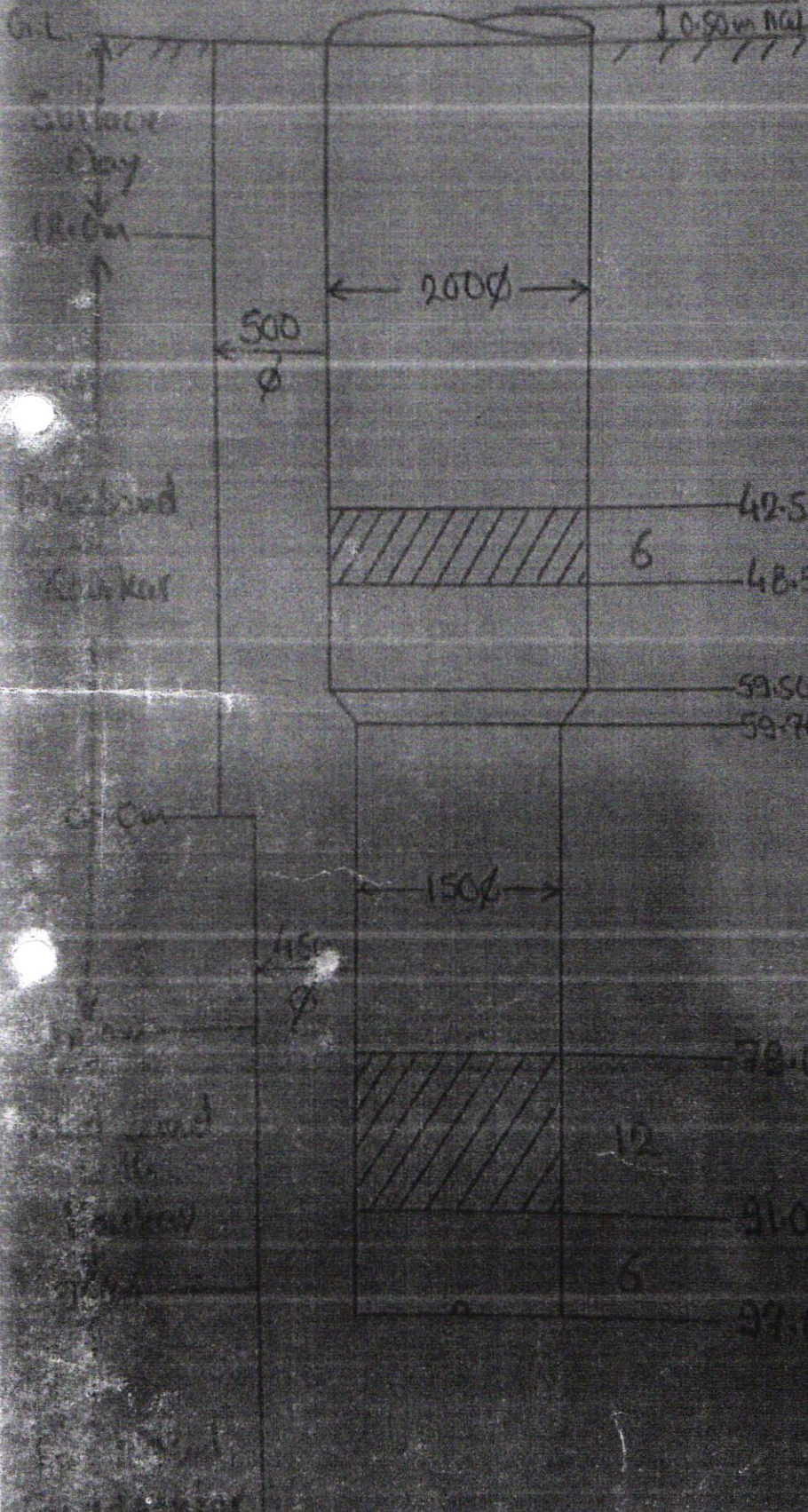
Purey Basau, Graha.

(JMC)

Req Q = 500 Lpm

Res. Size = 200X150 φ

Bores Size = 500X450 φ



Logging Report

- ① 42-49 (7m) Good to Moderate
- ② 48-93 (15m) Moderate
- ③ 184-191 (7m) Moderate