

REPORT ON GEO-PHYSICAL
ELECTRICAL LOGGING OF BOREHOLE

at

Lahadara Village

Garh Mukteswar, Hapur, Uttar Pradesh.

for

STATE WATER SANITATION MISSION(JAL JEEVAN MISSION)
U.P.Jal Nigam(Rural) Hapur, U.P

Submitted by

M/S. L.C.INFRA PROJECTS PRIVATE LIMITED



Conducted by

GLOBAL GROUND WATER CONSULTANTS

(Consulting Geologists & Geophysicists)

84- III Floor, Humayun pur, Safdarjung Enclave, New Delhi - 110 029

Phone: **9818-888824; 9818-007038.**

9th October, 2023

REPORT ON GEO-PHYSICAL RESISTIVITY LOGGING OF BOREHOLE

At

Lahadara village

Garh Mukteswar, Hapur, Uttar Pradesh.

Introduction:

A deep borehole 120m (394 Feet) was drilled by working agency M/s. L.C.Infra Projects Private Limited, Ghaziabad, U.P, as a part of their scope of work of development of tubewell under Jal Jeevan Mission Project of SWSM, GGWC conducted a Geophysical Resistivity logging in the above borehole using IGIS's Logger dated on 9th October, 2023

Based on the interpretation of the logging, the following lithology has been inferred which tallies fairly well with the well-site litho-log based on mud-wash samples.

<i>Depth in m</i>	<i>Expected Litholog</i>	<i>Expected Quality</i>
0 - 3	Surface Soil	
3 - 13	Fine sand	
13 - 22*	Fine sand	Good
22 - 26	Clay	
26 - 40*	Medium sand	Good
40 - 45	Clay	
45 - 51*	Fine sand	Good
51 - 101*	Medium sand	Good
101 - 110	Sandy clay	
110 - 120	Clay with kankar	

Conclusions and Recommendations:

1. The litholog inferred broadly tallies with that of the well-site litho-log.
2. The zones marked with asterisk (*) appear to be aquifer zones for possible development of tubewell.
3. As per thickness of the Aquifer the expected discharge is 1,30,000 LPH to 1,40,000 LPH.
4. Water Level is 13 m below ground level.
5. The Quality of water is Good. However It is recommended to have a chemical and bacteriological analysis of the water sample before using it for human consumption or for any other use.
6. *All projections and recommendations are subject to the inherent limitations of the technique employed and there could be variations as the underground conditions are not always amenable to physical interpretations.*

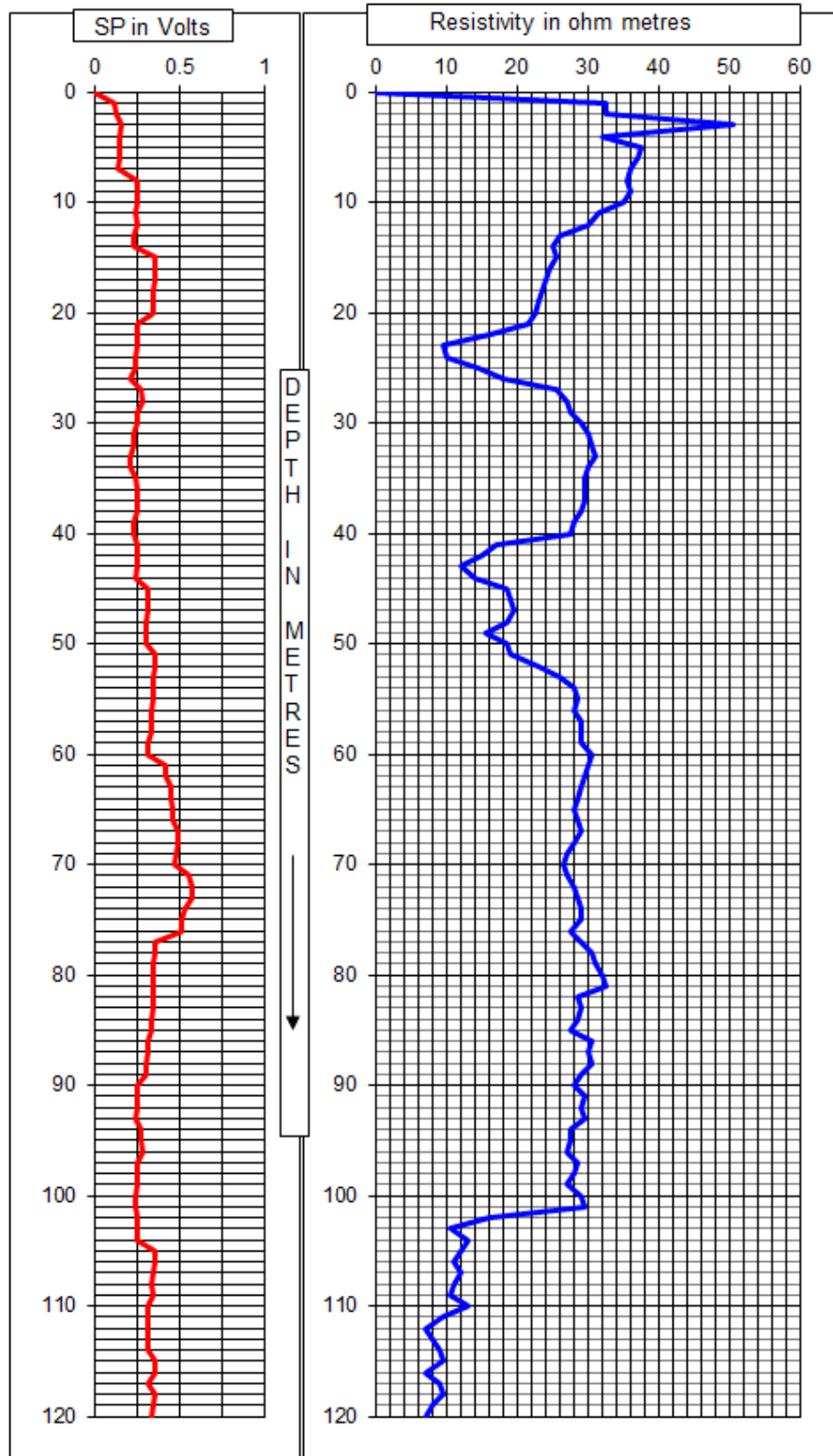
for Global Groundwater Consultants



A handwritten signature in blue ink, appearing to read "M. Ravikanth".

M.Ravikanth
Hydrogeologist

SP and Resistivity Curves



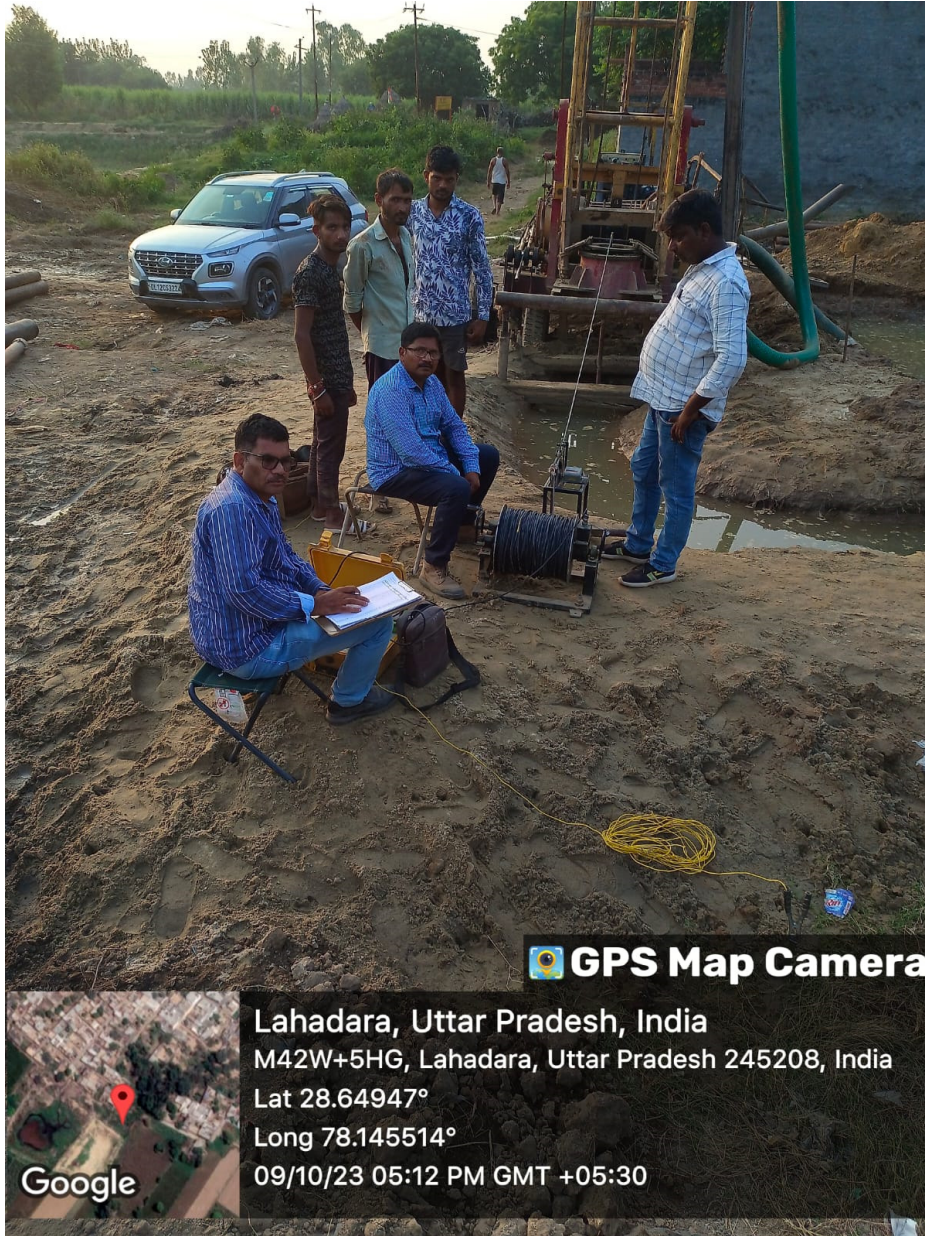


Photo of the site at time of Logging