



ELECTRIC LOGGING REPORT

8800225625
8901332878

ML Gupta, M.Sc. (Geophysics)
(Ex-Dy Director, HSMITC)

Date 12.5.23

Bore site GAIDABRA
Borehole drilling depth----- 140M
Bore logged depth -----140M
Electric logger used -----Continuous recording - IGIS make
Parameters recorded-----S.P.
Short normal 16"
Long Normal 64'
Logging date ----- 12.5.23

LITHOLOGICAL UNITS AT SITE

Depth(m)	Formation	Quality
0-12	Top soil	
12-16	Medium sand	
16-24-	Clay + kankar	
24-28	Medium sand	Fresh
28-8-34	Clay	
34-45	Medium sand+kankar	Fresh
45-47	Clay	
47-71	Medium/coarse sand	Fresh
71-73	Clay	
73-87	Medium/ sand	Fresh
87-89	Clay	
89-94	Medium sand	Fresh
94--100	Clay	
100-124	Medium/ sand	Fresh
124-139	Clay	

Water quality is likely to be fresh at site

Fig 6 Water logging Report



Recommended strainer positions

- 1 74-83=9m
- 2 91-94=3m
- 3 112-124=12m

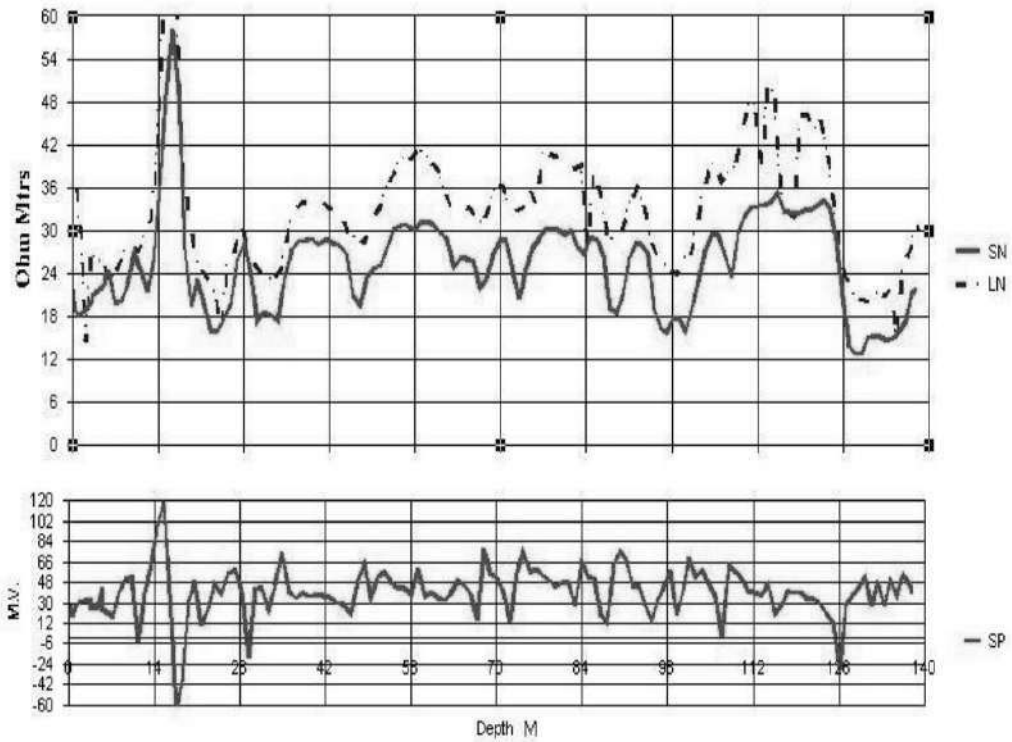
ML Gupta

(ML Gupta)

Encl: E log

3

Fig 7 Water logging Report



Well ID GAIDPR21

Date 5/12/2023 12:02:39 PM

4

Fig 8 Water logging Graph

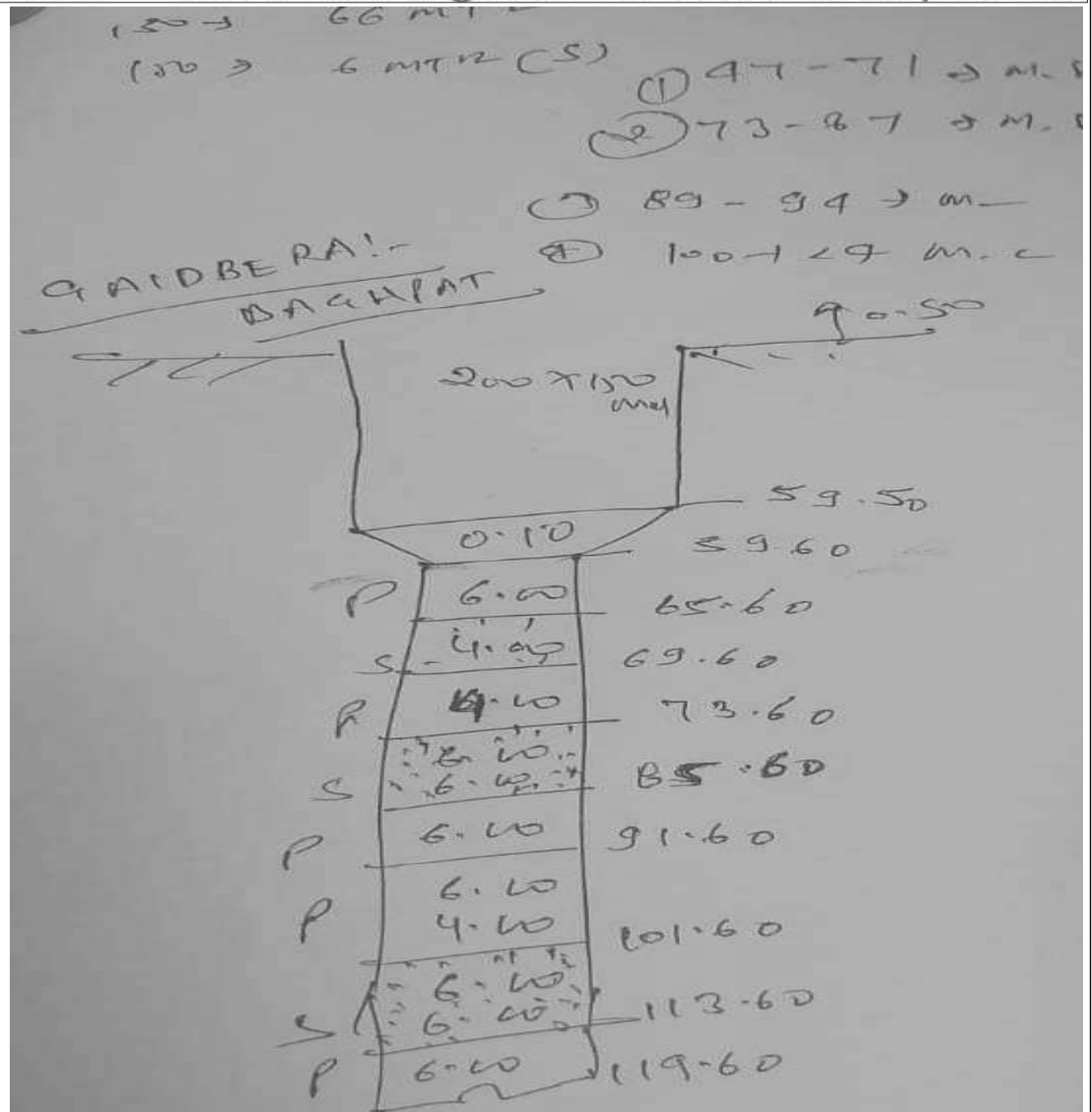


Fig 9 Strata chart