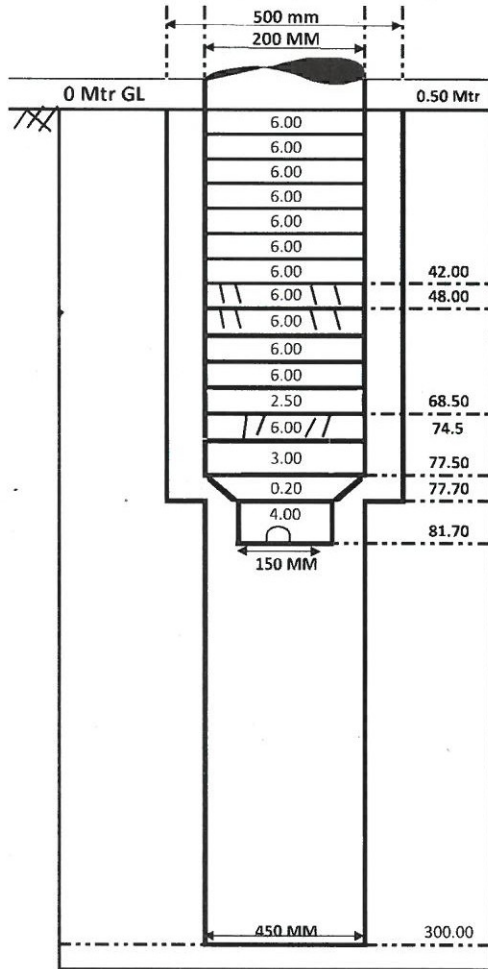


VINDHYA TELELINKS LIMITED - GAJA ENGINEERING
PVT LTD JV (JJM PHASE-03, SULTANPUR)



Strata Chart & Actual T/W Assembly of Size 200x150 mm Ø of G.P-TAMRESHPUR, Block- P.P KAMAICHA.



1	Bore Size	=	500X450 MM
2	Assembly Size	=	200x150 MM
3	Drilling Depth	=	300 mtr
4	Logging Depth	=	295mtr
5	Date of Logging	=	30-05-2023
6	Date of Lowering	=	31-05-2023
7	Required Discharge	=	470 LPM

Logging Report

S.N.	Depth Range (Mbgf)	Thickness(Mtr)	Remarks
1	12-15	3	GOOD
2	42-54	12	
3	68-75	7	

NOTE:- 1. ALL Zones are highly intermixed with fine bands of kankar. Quality of formation water is deteriorating marginal to saline from 83mbgf to tilled logged depth

SN	PIPE DETAIL	QUANTITY(Mtr)	Remarks
1	200 MM Ø HOUSING PIPE	60.00	
2	150 MM Ø PLAIN PIPE	4.00	
3	200 MM Ø SLOTTED PIPE	18.00	
4	200X150 MM REDUCER	0.20	
TOTAL LOWERING		82.20	
A.G.L		0.50	
B.G.L		81.70	

Prepared by

Contractor
Vindhya Telelinks Ltd Gaja Engineering Pvt. Ltd. JV

Checked by

Junior Engineer

Recommended by

Assistant Engineer

Approved by

Executive Engineer

M/s Mahalaxmi Tube well

Rajnendra Nagar Pukhrayan Kanpur 9935299290

Geophysical Well Logging Report

Ref No - 05/336

Date -30/05/2023

Site Location : - Tamreshpur PP Kamechha Sultanpur

District : - Sultanpur

Logged Depth : - 295 M BGL

Date of Logging : - 30/05/2023

Types of Log : - S.P&N16, N-64 LAT

Logger used : - IGIS

Rw- 16.7 Qm Rm- 15.4 Qm

The following permeable granular zones have been deciphered with the help of Electrical Logger

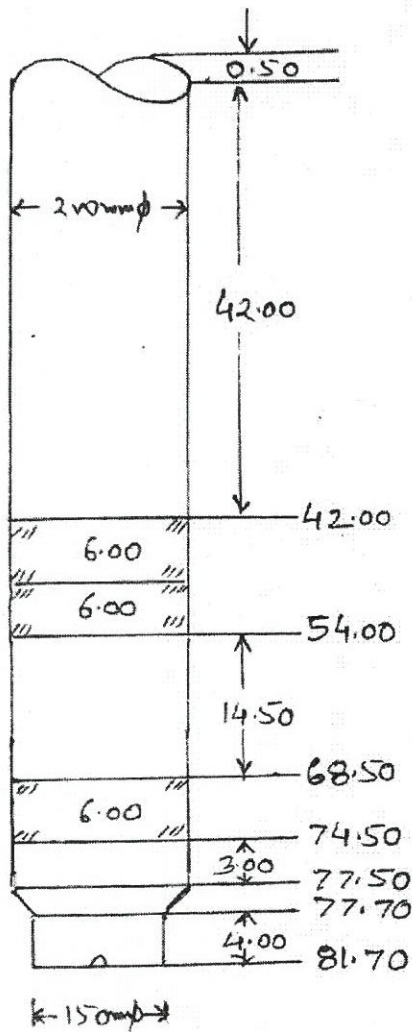
Sr NO	Depth Range From M.B.G.L	Depth Range M.B.G.L.	Thickness Mtr.	Inferred Lithology	Quality of G.W.
01	12	15	03	Fine to medium Sand	Good
02	42	54	12		
06	68	75	07		

Note- All zones are intermixed with fine bands of kankar. Quality of the formation water is deteriorating from 83 Mbgl to tilted logged depth.

- Logging performed as per SWSM guidelines.
 - Groundwater quality interpreted by firm as per their logger calibration
- G.Sh
31/05/23


M/s Mahalaxmi Tube Well

Proposed Tr Assembly chart of Tamraeshpur w/s scheme block Kamechha Distt Sultanpur



- 1- Discharge 470 LPM
- 2- Motor HP = 10HP
- 3- Assembly size = 200 x 150
- 4- Bore ϕ = 500 x 450
- 5- Logging Report of 30.5

- 1 - 12 - 15 = 3
 - 2 - 42 - 54 = 12
 - 3 - 68 - 75 = 7
- } gwl

water is deteriorating from 82 m bgl to tilted logged depth 29 m bgl