



REPORT ON GEOPHYSICAL WELL LOGGING AT

GRAM PANCHAYAT- HASANPUR JIWANI, BLOCK- BARAUT,
DISTT- BAGHPAT
UNDER
JAL JIVAN MISSION

Introduction :

A Deep bore hole was drilled 142 mtrs. depth. and Logged depth 142 mtrs. at above site. Was drilled by M/s LC Infra Projects Pvt. Ltd., Baghpat.

On the request of M/s LC Infra Projects Pvt. Ltd., Baghpat. a Geophysical well Logging in the above bore hole using IGIS Well Logger on 22.May.2023.

Logging Para meters - Self potential, short normal (N-16), Long Normal (N-64), Lateral. Details of major aquifer formations explored from logging of bore hole combined with the study of Strata Chart prepared from drill cuttings are given in the following table:-

S.No.	Depth range(m)	Thickness(m)	Lithology	Expected Water Quality
1.	0 - 5	5	Surface soil	
2.	5 - 12	7	Clay	
3.	12 - 20	8	Dry sand	
4.	20 - 25	5	Clay kankar	
5.	25 - 35	10	Medium sand	Medium
6.	35 - 43	8	Clay kankar	
7.	43 - 57*	14	Medium sand	Medium
8.	57 - 61	4	Clay kankar	
9.	61 - 65	4	Fine sand	Medium
10.	65 - 70	5	Clay kankar	
11.	70 - 80*	10	Medium sand	Medium
12.	80 - 98	18	Clay kankar	
13.	98 - 102	4	Fine sand	Medium
14.	102 - 120	18	Clay kankar	
15.	120 - 130*	10	Medium sand	Medium
16.	130 - 136	6	Clay kankar	
17.	136 - 140*	4	Medium sand	Medium
18.	140 - 142	2	Clay	

Ground Water Survey Consultancy



Fig 6 Water logging Report

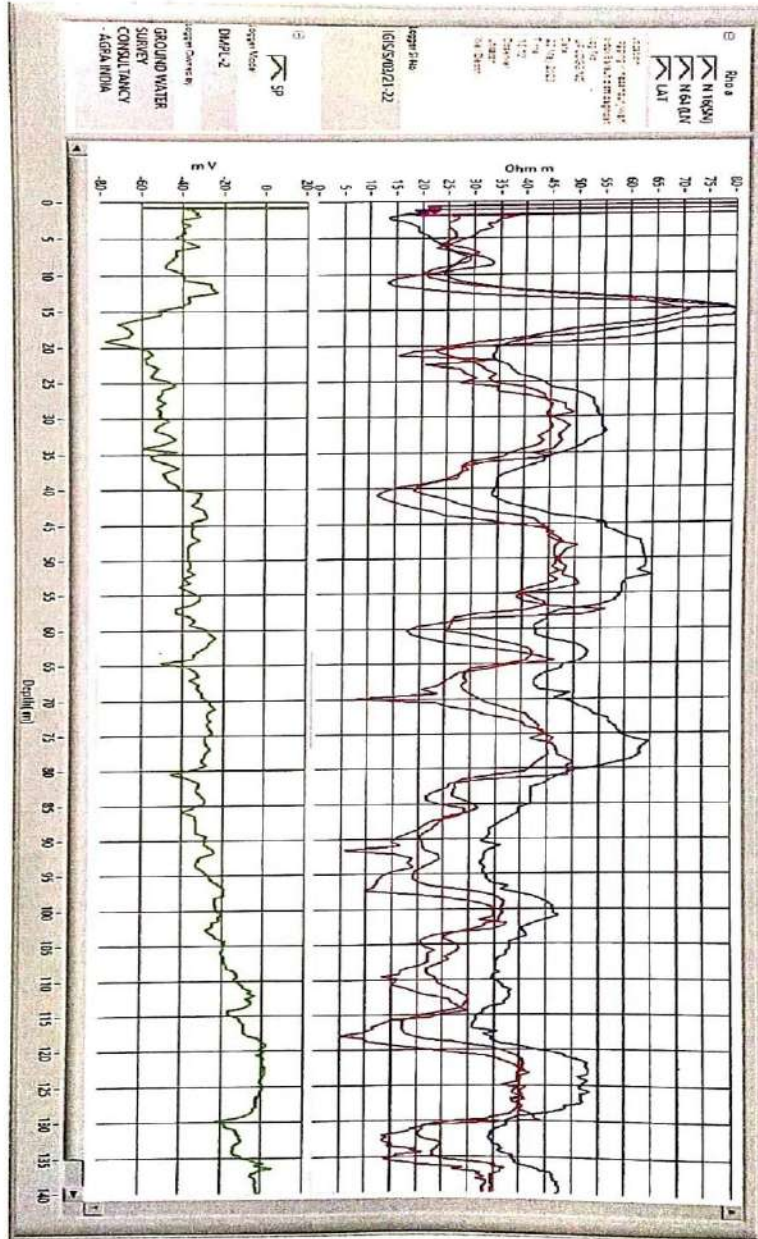


Fig 7 Logging Graph