



Logging at : Mubarikpur Village, Khekra, Baghpat, , U.P

1

REPORT ON GEO-PHYSICAL RESISTIVITY LOGGING OF BOREHOLE
At
Mubarikpur
Khekra, Baghpat, Uttar Pradesh.

Introduction:

A deep borehole 142m (465 Feet) was drilled by working agency *M/s. L.C.Infra Projects Private Limited, Baghpat, U.P*, as a part of their scope of work of development of tubewell under Jal Jeevan Mission Project of SWSM, GGWC conducted a Geophysical Resistivity logging in the above borehole using IGIS's Logger dated on 13th June, 2023

Based on the interpretation of the logging, the following lithology has been inferred which tallies fairly well with the well-site litho-log based on mud-wash samples.

<i>Depth in m</i>	<i>Expected Litholog</i>	<i>Expected Quality</i>
0 - 3	Surface Soil	
3 - 22	Fine sand	
22 - 67*	Medium sand	Good
67 - 76	Clay	
76 - 86*	Fine to medium sand	Good
86 - 97	Clay	
97 - 100*	Fine sand	Good
100 - 103	Clay	
103 - 111*	Medium sand	Good
111 - 142	Clay with kankar	

*Global Groundwater Consultants
Consulting Geologists and Geophysists*

Fig 6 Water logging Report



Logging at : Mubarikpur Village, Khekra, Baghpat, , U.P

2

Conclusions and Recommendations:

1. The litholog inferred broadly tallies with that of the well-site litho-log.
2. The zones marked with asterisk (*) appear to be aquifer zones for possible development of tubewell.
3. As per thickness of the Aquifer the expected discharge is 80,000 LPH to 90,000 LPH.
4. Water Level is 22 m below ground level.
5. The Quality of water is Good. However It is recommended to have a chemical and bacteriological analysis of the water sample before using it for human consumption or for any other use.
6. *All projections and recommendations are subject to the inherent limitations of the technique employed and there could be variations as the underground conditions are not always amenable to physical interpretations.*

for Global Groundwater Consultants



M.Ravikanth
Hydrogeologist

Global Groundwater Consultants
Consulting Geologists and Geophysists

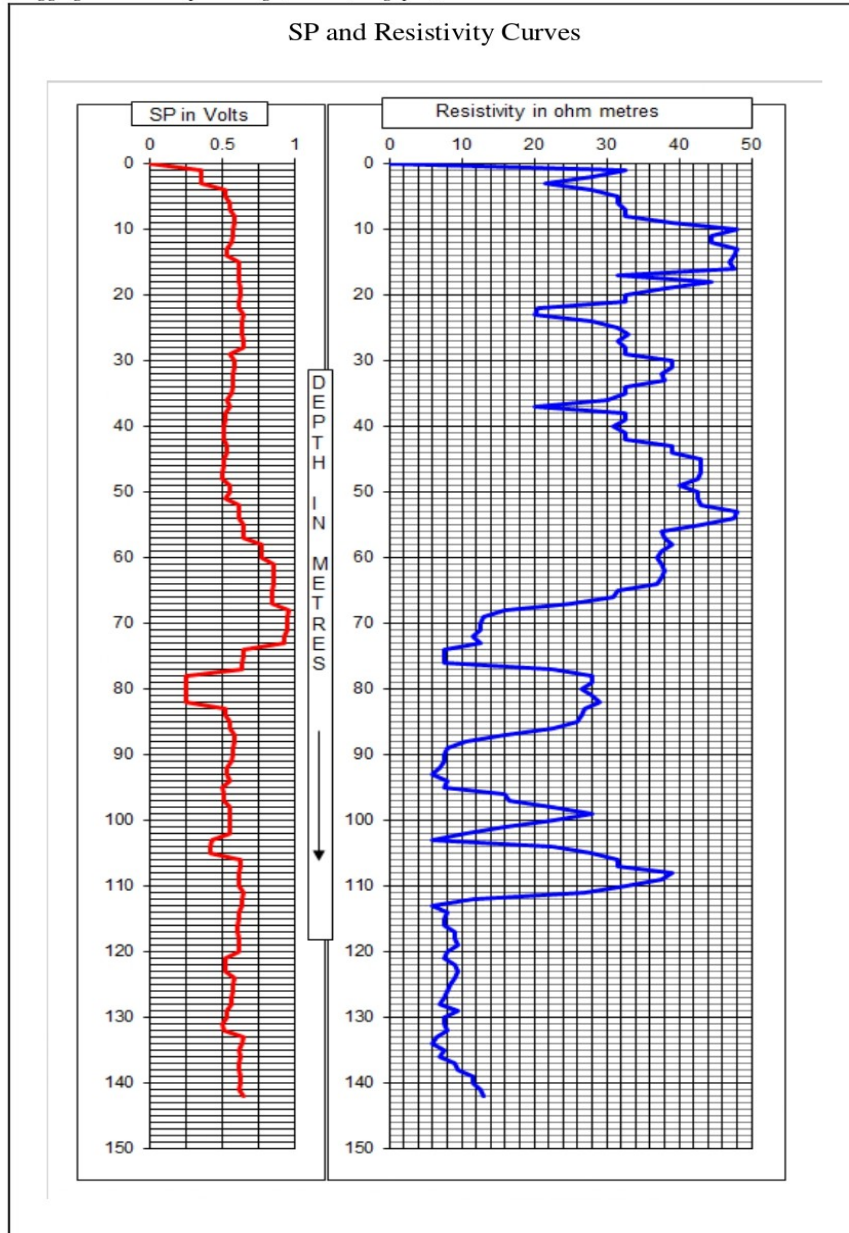
Fig 7. Water logging Report



Logging at : Mubarikpur Village, Khekra, Baghpat, , U.P

3

SP and Resistivity Curves



Global Groundwater Consultants
Consulting Geologists and Geophysists

Fig 8 Water logging Graph