



**REPORT ON GEOPHYSICAL WELL LOGGING  
AT**

**GRAM PANCHAYAT- MOJIDABAD NANGAL BAGHWANPUR, BLOCK- BINOLI,  
DISTT- BAGHPAT  
UNDER  
JAL JIVAN MISSION**

**Introduction :**

A Deep bore hole was drilled 145 mtrs. depth. and Logged depth 145 mtrs. at above site. Was drilled by M/s LC Infra Projects Pvt. Ltd., Baghpat.

On the request of M/s LC Infra Projects Pvt. Ltd., Baghpat. a Geophysical well Logging in the above bore hole using IGIS Well Logger on 07.May.2023.

Logging Para meters - Self potential, short normal (N-16), Long Normal (N-64), Lateral. Details of major aquifer formations explored from logging of bore hole combined with the study of Strata Chart prepared from drill cuttings are given in the following table:-

S.No.	Depth range(m)	Thickness(m)	Lithology	Expected Water Quality
1.	0 - 5	5	Surface soil	
2.	5 - 20	15	Dry sand	
3.	20 - 25	5	Clay kankar	
4.	25 - 33	8	Fine to Medium sand	Medium
5.	33 - 40	7	Clay kankar	
6.	40 - 56	16	Medium sand	Medium
7.	56 - 60	4	Clay kankar	
8.	60 - 66*	6	Fine to Medium sand	Medium
9.	66 - 70	4	Clay kankar	
10.	70 - 80	10	Medium sand	Medium
11.	80 - 95	15	Clay kankar	
12.	95 - 112*	17	Medium sand & kankar	Medium
13.	112 - 118	6	Clay kankar	
14.	118 - 128	10	Sand & kankar	Medium
15.	128 - 132	4	Clay kankar	
16.	132 - 137*	5	Fine to Medium sand	Medium
17.	137 - 145	8	Clay kankar	

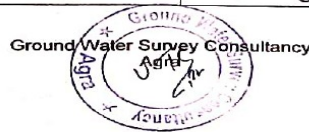


Fig 6 Water logging Report

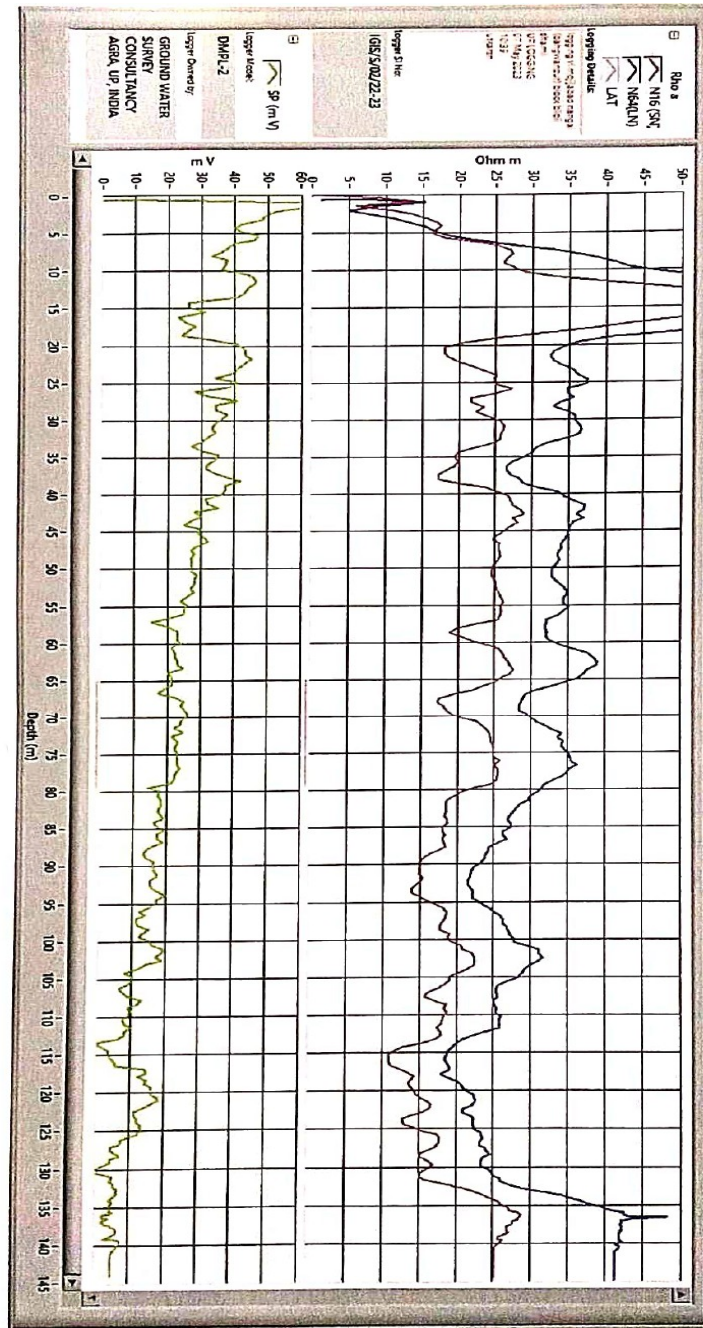


Fig 7 Logging Graph