

GROUND WATER SURVEY CONSULTANCY
GEOLOGISTS, GEOPHYSICISTS & TUBEWELL ENGINEERS

**GEO-PHYSICAL WELL
ELECTROLOGGING REPORT**

Ref No:-A-2234

Date:- 27-11-2023

NAME OF SITE

GRAM PANCHAYAT- Khera Kishni Pukhta BLOCK- Usawan DISTT- Badaun

NAME OF AGENCY

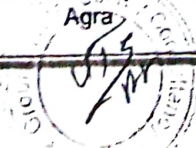
M/s PNC-SPML-JV
Badaun



GROUND WATER SURVEY CONSULTANCY
Electric Well Logging, Geophysical Resistivity Survey, Ground Water Investigations.
112 A-Shree Nagar Colony, Firozabad Road, Agra- 282006
(M) : 9412260823, 9794625420, 9761163000, Email : gwsc_agra@yahoo.com

ISO ; 9001 : 2015

Ground Water Survey Consultancy



REPORT ON GEOPHYSICAL WELL LOGGING AT

GRAM PANCHAYAT- KHERA KISHINI PUKHTA, BLOCK- USAWAN, DISTT- BADAUN
UNDER
JAL JIVAN MISSION

Introduction :

A Deep bore hole was drilled 185 mtrs. depth. and Logged depth 185 mtrs. at above site. Was drilled by M/S PNC-SPML-JV, Badaun.

On the request of M/S PNC-SPML-JV, Badaun. a Geophysical well Logging is conduct at above bore hole using IGIS Well Logger on 27.Nov.2023.

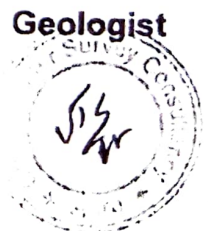
Logging Para meters - Self potential, short normal (N-16), Long Normal (N-64), Lateral. Details of major aquifer formations explored from logging of bore hole combined with the study of Strata Chart prepared from drill cuttings are given in the following table:-

S.No.	Depth range(m)	Thickness(m)	Lithology	Expected Water Quality
1.	0 - 5	5	Surface soil	
2.	5 - 11	6	Fine to Medium sand	
3.	11 - 15	4	Clay kankar	
4.	15 - 24	9	Medium sand	Medium
5.	24 - 45	21	Clay kankar	
6.	45 - 49*	4	Medium sand	Medium
7.	49 - 60	11	Clay kankar	
8.	60 - 66*	6	Fine to Medium sand	Medium
9.	66 - 103	37	Clay kankar	
10.	103 - 110*	7	Medium sand	Medium
11.	110 - 115	5	Clay kankar	
12.	115 - 120*	5	Fine to Medium sand	Medium
13.	120 - 130	10	Clay kankar	
14.	130 - 132	2	Fine sand	Medium
15.	132 - 140	8	Clay kankar	
16.	140 - 149*	9	Fine to Medium sand	Medium
17.	149 - 185	36	Clay kankar	

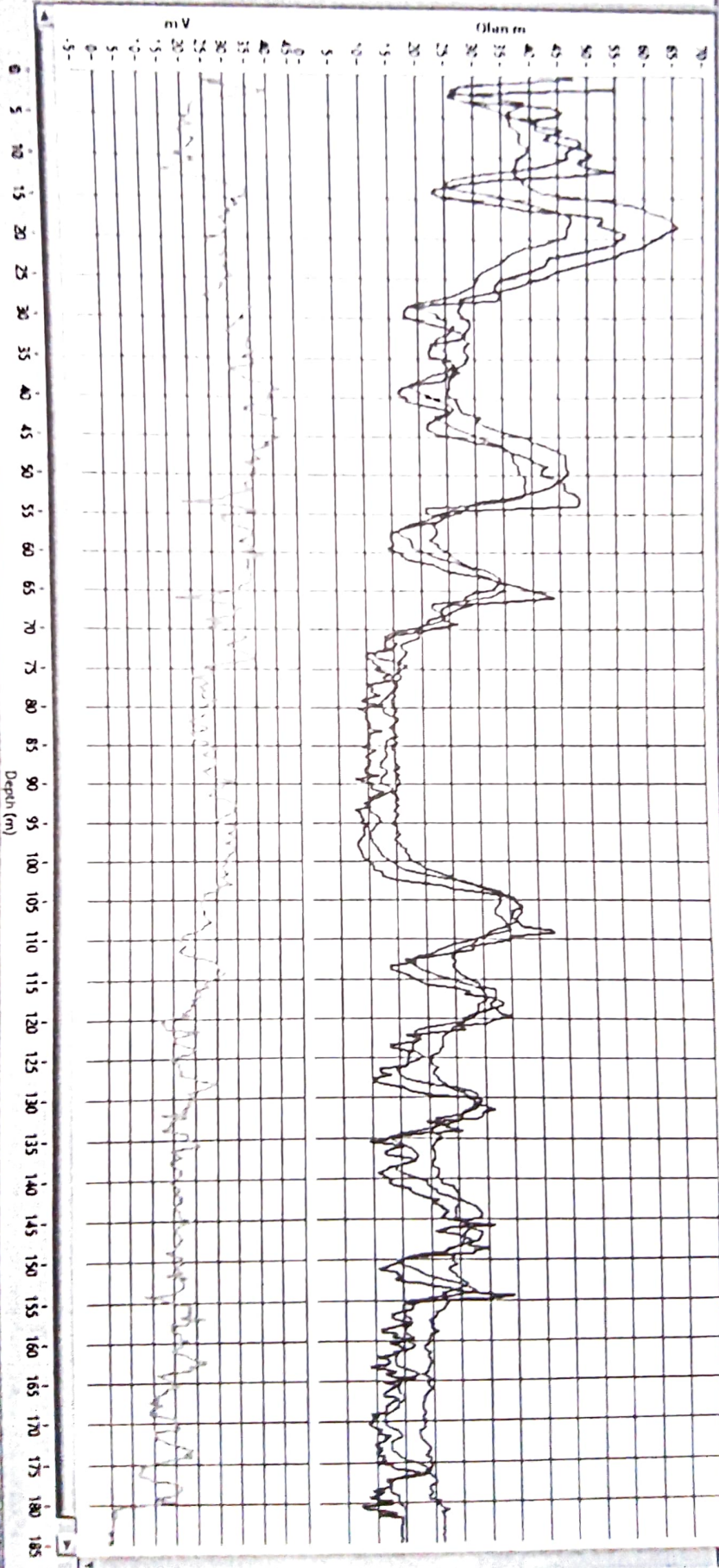


Conclusions and Recommendations :-

1. The Lithology broadly tallies with that of drill cutting strata chart.
2. The zones marked with asterisk (*) appear to be aquifer zones for possible development of tubewell.
3. The Quality of water is expected Medium.
4. It is recommended to have a chemical and bacteriological analysis of the water sample before using it for human consumption or for any other use.
5. All projections and recommendations are subject to the inherent limitations of the technique employed and there could be variations as the underground conditions are not always amenable to physical interpretations.



11
 17.5
 18.5
 19.5
 20.5
 21.5
 22.5
 23.5
 24.5
 25.5
 26.5
 27.5
 28.5
 29.5
 30.5
 31.5
 32.5
 33.5
 34.5
 35.5
 36.5
 37.5
 38.5
 39.5
 40.5
 41.5
 42.5
 43.5
 44.5
 45.5
 46.5
 47.5
 48.5
 49.5
 50.5
 51.5
 52.5
 53.5
 54.5
 55.5
 56.5
 57.5
 58.5
 59.5
 60.5
 61.5
 62.5
 63.5
 64.5
 65.5
 66.5
 67.5
 68.5
 69.5
 70.5
 71.5
 72.5
 73.5
 74.5
 75.5
 76.5
 77.5
 78.5
 79.5
 80.5
 81.5
 82.5
 83.5
 84.5
 85.5
 86.5
 87.5
 88.5
 89.5
 90.5
 91.5
 92.5
 93.5
 94.5
 95.5
 96.5
 97.5
 98.5
 99.5
 100.5
 101.5
 102.5
 103.5
 104.5
 105.5
 106.5
 107.5
 108.5
 109.5
 110.5
 111.5
 112.5
 113.5
 114.5
 115.5
 116.5
 117.5
 118.5
 119.5
 120.5
 121.5
 122.5
 123.5
 124.5
 125.5
 126.5
 127.5
 128.5
 129.5
 130.5
 131.5
 132.5
 133.5
 134.5
 135.5
 136.5
 137.5
 138.5
 139.5
 140.5
 141.5
 142.5
 143.5
 144.5
 145.5
 146.5
 147.5
 148.5
 149.5
 150.5
 151.5
 152.5
 153.5
 154.5
 155.5
 156.5
 157.5
 158.5
 159.5
 160.5
 161.5
 162.5
 163.5
 164.5
 165.5
 166.5
 167.5
 168.5
 169.5
 170.5
 171.5
 172.5
 173.5
 174.5
 175.5
 176.5
 177.5
 178.5
 179.5
 180.5
 181.5
 182.5
 183.5
 184.5
 185.5
 186.5
 187.5
 188.5
 189.5
 190.5
 191.5
 192.5
 193.5
 194.5
 195.5
 196.5
 197.5
 198.5
 199.5
 200.5
 201.5
 202.5
 203.5
 204.5
 205.5
 206.5
 207.5
 208.5
 209.5
 210.5
 211.5
 212.5
 213.5
 214.5
 215.5
 216.5
 217.5
 218.5
 219.5
 220.5
 221.5
 222.5
 223.5
 224.5
 225.5
 226.5
 227.5
 228.5
 229.5
 230.5
 231.5
 232.5
 233.5
 234.5
 235.5
 236.5
 237.5
 238.5
 239.5
 240.5
 241.5
 242.5
 243.5
 244.5
 245.5
 246.5
 247.5
 248.5
 249.5
 250.5
 251.5
 252.5
 253.5
 254.5
 255.5
 256.5
 257.5
 258.5
 259.5
 260.5
 261.5
 262.5
 263.5
 264.5
 265.5
 266.5
 267.5
 268.5
 269.5
 270.5
 271.5
 272.5
 273.5
 274.5
 275.5
 276.5
 277.5
 278.5
 279.5
 280.5
 281.5
 282.5
 283.5
 284.5
 285.5
 286.5
 287.5
 288.5
 289.5
 290.5
 291.5
 292.5
 293.5
 294.5
 295.5
 296.5
 297.5
 298.5
 299.5
 300.5
 301.5
 302.5
 303.5
 304.5
 305.5
 306.5
 307.5
 308.5
 309.5
 310.5
 311.5
 312.5
 313.5
 314.5
 315.5
 316.5
 317.5
 318.5
 319.5
 320.5
 321.5
 322.5
 323.5
 324.5
 325.5
 326.5
 327.5
 328.5
 329.5
 330.5
 331.5
 332.5
 333.5
 334.5
 335.5
 336.5
 337.5
 338.5
 339.5
 340.5
 341.5
 342.5
 343.5
 344.5
 345.5
 346.5
 347.5
 348.5
 349.5
 350.5
 351.5
 352.5
 353.5
 354.5
 355.5
 356.5
 357.5
 358.5
 359.5
 360.5
 361.5
 362.5
 363.5
 364.5
 365.5
 366.5
 367.5
 368.5
 369.5
 370.5
 371.5
 372.5
 373.5
 374.5
 375.5
 376.5
 377.5
 378.5
 379.5
 380.5
 381.5
 382.5
 383.5
 384.5
 385.5
 386.5
 387.5
 388.5
 389.5
 390.5
 391.5
 392.5
 393.5
 394.5
 395.5
 396.5
 397.5
 398.5
 399.5
 400.5
 401.5
 402.5
 403.5
 404.5
 405.5
 406.5
 407.5
 408.5
 409.5
 410.5
 411.5
 412.5
 413.5
 414.5
 415.5
 416.5
 417.5
 418.5
 419.5
 420.5
 421.5
 422.5
 423.5
 424.5
 425.5
 426.5
 427.5
 428.5
 429.5
 430.5
 431.5
 432.5
 433.5
 434.5
 435.5
 436.5
 437.5
 438.5
 439.5
 440.5
 441.5
 442.5
 443.5
 444.5
 445.5
 446.5
 447.5
 448.5
 449.5
 450.5
 451.5
 452.5
 453.5
 454.5
 455.5
 456.5
 457.5
 458.5
 459.5
 460.5
 461.5
 462.5
 463.5
 464.5
 465.5
 466.5
 467.5
 468.5
 469.5
 470.5
 471.5
 472.5
 473.5
 474.5
 475.5
 476.5
 477.5
 478.5
 479.5
 480.5
 481.5
 482.5
 483.5
 484.5
 485.5
 486.5
 487.5
 488.5
 489.5
 490.5
 491.5
 492.5
 493.5
 494.5
 495.5
 496.5
 497.5
 498.5
 499.5
 500.5
 501.5
 502.5
 503.5
 504.5
 505.5
 506.5
 507.5
 508.5
 509.5
 510.5
 511.5
 512.5
 513.5
 514.5
 515.5
 516.5
 517.5
 518.5
 519.5
 520.5
 521.5
 522.5
 523.5
 524.5
 525.5
 526.5
 527.5
 528.5
 529.5
 530.5
 531.5
 532.5
 533.5
 534.5
 535.5
 536.5
 537.5
 538.5
 539.5
 540.5
 541.5
 542.5
 543.5
 544.5
 545.5
 546.5
 547.5
 548.5
 549.5
 550.5
 551.5
 552.5
 553.5
 554.5
 555.5
 556.5
 557.5
 558.5
 559.5
 560.5
 561.5
 562.5
 563.5
 564.5
 565.5
 566.5
 567.5
 568.5
 569.5
 570.5
 571.5
 572.5
 573.5
 574.5
 575.5
 576.5
 577.5
 578.5
 579.5
 580.5
 581.5
 582.5
 583.5
 584.5
 585.5
 586.5
 587.5
 588.5
 589.5
 590.5
 591.5
 592.5
 593.5
 594.5
 595.5
 596.5
 597.5
 598.5
 599.5
 600.5
 601.5
 602.5
 603.5
 604.5
 605.5
 606.5
 607.5
 608.5
 609.5
 610.5
 611.5
 612.5
 613.5
 614.5
 615.5
 616.5
 617.5
 618.5
 619.5
 620.5
 621.5
 622.5
 623.5
 624.5
 625.5
 626.5
 627.5
 628.5
 629.5
 630.5
 631.5
 632.5
 633.5
 634.5
 635.5
 636.5
 637.5
 638.5
 639.5
 640.5
 641.5
 642.5
 643.5
 644.5
 645.5
 646.5
 647.5
 648.5
 649.5
 650.5
 651.5
 652.5
 653.5
 654.5
 655.5
 656.5
 657.5
 658.5
 659.5
 660.5
 661.5
 662.5
 663.5
 664.5
 665.5
 666.5
 667.5
 668.5
 669.5
 670.5
 671.5
 672.5
 673.5
 674.5
 675.5
 676.5
 677.5
 678.5
 679.5
 680.5
 681.5
 682.5
 683.5
 684.5
 685.5
 686.5
 687.5
 688.5
 689.5
 690.5
 691.5
 692.5
 693.5
 694.5
 695.5
 696.5
 697.5
 698.5
 699.5
 700.5
 701.5
 702.5
 703.5
 704.5
 705.5
 706.5
 707.5
 708.5
 709.5
 710.5
 711.5
 712.5
 713.5
 714.5
 715.5
 716.5
 717.5
 718.5
 719.5
 720.5
 721.5
 722.5
 723.5
 724.5
 725.5
 726.5
 727.5
 728.5
 729.5
 730.5
 731.5
 732.5
 733.5
 734.5
 735.5
 736.5
 737.5
 738.5
 739.5
 740.5
 741.5
 742.5
 743.5
 744.5
 745.5
 746.5
 747.5
 748.5
 749.5
 750.5
 751.5
 752.5
 753.5
 754.5
 755.5
 756.5
 757.5
 758.5
 759.5
 760.5
 761.5
 762.5
 763.5
 764.5
 765.5
 766.5
 767.5
 768.5
 769.5
 770.5
 771.5
 772.5
 773.5
 774.5
 775.5
 776.5
 777.5
 778.5
 779.5
 780.5
 781.5
 782.5
 783.5
 784.5
 785.5
 786.5
 787.5
 788.5
 789.5
 790.5
 791.5
 792.5
 793.5
 794.5
 795.5
 796.5
 797.5
 798.5
 799.5
 800.5
 801.5
 802.5
 803.5
 804.5
 805.5
 806.5
 807.5
 808.5
 809.5
 810.5
 811.5
 812.5
 813.5
 814.5
 815.5
 816.5
 817.5
 818.5
 819.5
 820.5
 821.5
 822.5
 823.5
 824.5
 825.5
 826.5
 827.5
 828.5
 829.5
 830.5
 831.5
 832.5
 833.5
 834.5
 835.5
 836.5
 837.5
 838.5
 839.5
 840.5
 841.5
 842.5
 843.5
 844.5
 845.5
 846.5
 847.5
 848.5
 849.5
 850.5
 851.5
 852.5
 853.5
 854.5
 855.5
 856.5
 857.5
 858.5
 859.5
 860.5
 861.5
 862.5
 863.5
 864.5
 865.5
 866.5
 867.5
 868.5
 869.5
 870.5
 871.5
 872.5
 873.5
 874.5
 875.5
 876.5
 877.5
 878.5
 879.5
 880.5
 881.5
 882.5
 883.5
 884.5
 885.5
 886.5
 887.5
 888.5
 889.5
 890.5
 891.5
 892.5
 893.5
 894.5
 895.5
 896.5
 897.5
 898.5
 899.5
 900.5
 901.5
 902.5
 903.5
 904.5
 905.5
 906.5
 907.5
 908.5
 909.5
 910.5
 911.5
 912.5
 913.5
 914.5
 915.5
 916.5
 917.5
 918.5
 919.5
 920.5
 921.5
 922.5
 923.5
 924.5
 925.5
 926.5
 927.5
 928.5
 929.5
 930.5
 931.5
 932.5
 933.5
 934.5
 935.5
 936.5
 937.5
 938.5
 939.5
 940.5
 941.5
 942.5
 943.5
 944.5
 945.5
 946.5
 947.5
 948.5
 949.5
 950.5
 951.5
 952.5
 953.5
 954.5
 955.5
 956.5
 957.5
 958.5
 959.5
 960.5
 961.5
 962.5
 963.5
 964.5
 965.5
 966.5
 967.5
 968.5
 969.5
 970.5
 971.5
 972.5
 973.5
 974.5
 975.5
 976.5
 977.5
 978.5
 979.5
 980.5
 981.5
 982.5
 983.5
 984.5
 985.5
 986.5
 987.5
 988.5
 989.5
 990.5
 991.5
 992.5
 993.5
 994.5
 995.5
 996.5
 997.5
 998.5
 999.5
 1000.5



U/S
 Pt