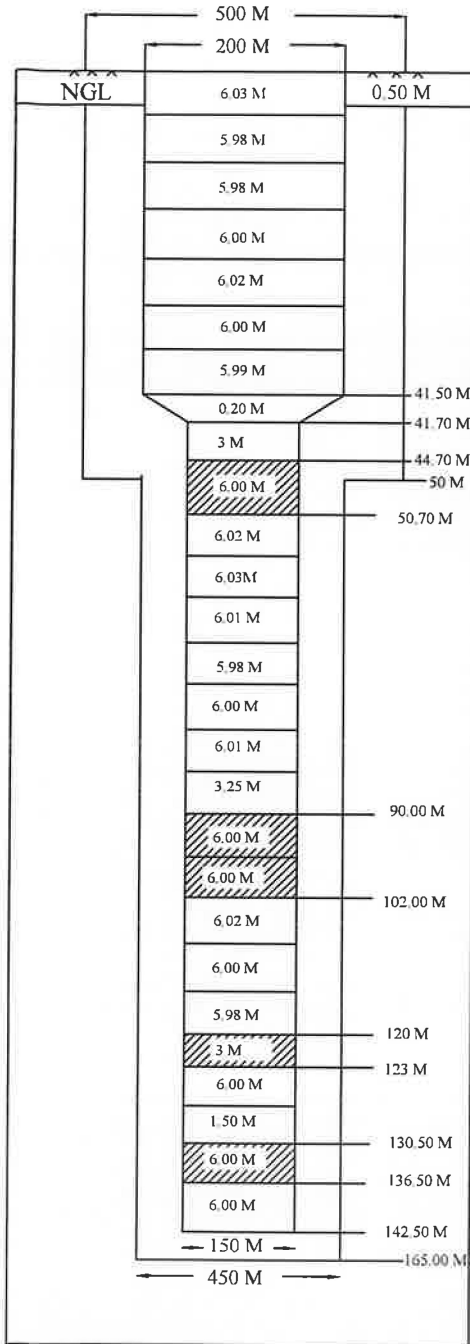


STRATA CHART & ACTUAL ASSEMBLY CHART OF TUBEWELL

NAME OF SCHEME - BARABANKI WSS BLOCK - BANKI
 NAME OF SITE - MOHAMMADPUR DISTRICT - BARABANKI
 NAME OF COMPANY - PNC-SMPL JV



DATE OF LOGGING	04/02/2023
DRILLING DEPTH	165.00 m
LOGGING DEPTH	165.28m
ASSEMBLY	200X150 mm
BORE	500X450 mm
DISCHARGE	550 LPM/10 HP

Sl. no.	DEPTH		THICKNESS	REMARKS
	FROM	TO		
1	10	14	4	Good
2	31	43	12	Good
3	43	52	9	Good
4	89	100	11	Good
5	100	104	4	Good
6	119	125	6	Good
7	129	137	8	Good
8	145	155	10	Good
9	155	162	7	Good

Sl. no.	DEPTH		Remarks
	From(m)	To(m)	
1	0	10	Top soil
2	10	14	Coares grain sand
3	14	31	Clay with sand
4	31	43	Coares to medium grain sand
5	43	52	Medium to fine grain sand
6	52	71.5	Clay with sand
7	71.5	74	Fine grain sand
8	74	81	Sand with clay
9	81	86	Fine grain sand
10	86	89	Clay with sand
11	89	100	Coares grain sand
12	100	104	Coares to medium grain sand
13	104	109	fine grain sand
14	109	119	sand with clay
15	119	125	Medium to fine grain sand
16	125	129	Clay
17	129	137	Medium to fine grain sand
18	137	145	Clay with sand
19	145	155	Coares to medium grain sand
20	155	162	Medium to fine grain sand

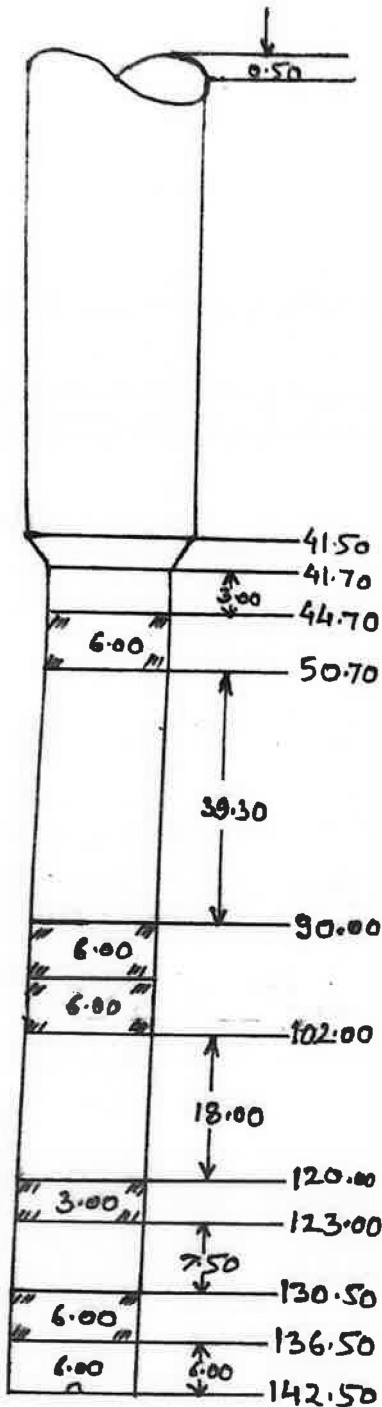
Sl. no.	DESCRIPTION	METER	REMARKS
1	200 MM PLAIN PIPE	42	
2	REDUCER	0.2	
3	150 MM PLAIN PIPE	73.5	
4	150 MM SLOTTED PIPE	27	
5	BGL	142.50	
6	AGL	0.5	
	TOTAL	143.00	



Prepared By- PNC-SMPL JV	Checked By- JR. ENGINEER	Recommended By- ASST. ENGINEER	Approved By- EXECUTIVE ENGINEER
-----------------------------	---	---	------------------------------------

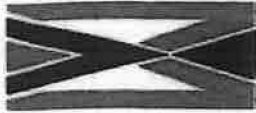
Proposed Tw Assembly chart of Mohammadpur w/s scheme block Banki

Distt. Barabanki



1. Discharge = 550 LPM
2. Motor HP = 10 HP
3. Assembly size 210 x 150 mm
4. Bore ϕ 500 x 450 mm ϕ
5. Logging Report dt 4-2-23

- 1- 0 - 10 = 10 Topsoil
- 2- 10 - 14 = 4 Coarse grains sand
- 3- 14 - 31 = 17 Clay with sand
- 4- 31 - 43 = 12 Coarse to medium
- 6 - 5- 43 - 52 = 9 medium to fine sand
- 6- 52 - 71.5 = 19.5 Clay with sand
- 7- 71.5 - 74 = 2.5 fine grain sand
- 8- 74 - 81 = 7 Sand with clay
- 9- 81 - 86 = 5 fine grain sand
- 10- 86 - 89 = 3 Clay with sand
- 9 - 11 - 89 - 100 = 11 Coarse grain sand
- 3 - 12 - 100 - 104 = 4 Coarse to medium
- 13- 104 - 109 = 5 Fine grain sand
- 14- 109 - 119 = 10 Sand with clay
- 3 - 15- 119 - 125 = 6 Medium to fine
- 16- 125 - 129 = 4 clay
- 6 - 17- 129 - 137 = 8 Medium to fine
- 18- 137 - 145 = 8 clay with sand
- 19- 145 - 155 = 10 Coarse to medium
- 20- 155 - 162 = 7 Medium to fine



GEOPHYSICAL DIGITAL LOGGING REPORT

SITE:	MOHAMMADPUR	DATE OF LOGGING:	04.02.2023
BLOCK:	BANKI	DRILLING DEPTH:	165.00M
STATE:	UTTAR PRADESH	LOGGING DEPTH:	165.28M
ENGG:	ASHOK KUMAR	LOGGING COMPANY:	Mining Associates Pvt. Ltd.
Rm	0.528ohm/m	Rw	0.392ohm/m
DISTRIC	BARABANKI		

AQUIFER:-

The depth zones with high resistivity and relatively low Natural Gamma radioactivity values are referred as Aquifer Zones.

CLAY:-

The depth zones with less resistivity and relatively high Natural Gamma radioactivity values are referred as Clay zones.

NOTE:- These values are only indicative. The thin clay or sand layer does not reveal its actual resistivity value

Sl. No.	Depth		Thickness (m)	Inferred lithology	Remark(Quality of Aquifer Water)
	From (m)	To (m)			
1	0	10	10	Top Soil	
2	10	14	4	Coares grain sand	Good
3	14	31	17	Clay with sand	
4	31	43	12	Coares to medium grain sand	Good
5	43	52	9	Medium to fine grain sand	Good
6	52	71.5	19.5	Clay with sand	
7	71.5	74	2.5	fine grain sand	Medium
8	74	81	7	Sand with clay	
9	81	86	5	fine grain sand	Medium
10	86	89	3	Clay with sand	
11	89	100	11	Coares grain sand	Good
12	100	104	4	Coares to medium grain sand	Good
13	104	109	5	fine grain sand	Medium
14	109	119	10	Sand with clay	
15	119	125	6	Medium to fine grain sand	Good
16	125	129	4	Clay	
17	129	137	8	Medium to fine grain sand	Good
18	137	145	8	Clay with sand	
19	145	155	10	Coares to medium grain sand	Good
20	155	162	7	Medium to fine grain sand	Good

NOTE:-

1. ALL zones has intermixed with thin band of kankar

Verified as per logs provided.
 Note- Groundwater quality interpreted by from as per their logger calibration
 For Mining Associates Pvt. Ltd.
 Ashok Kumar
 Geophysicist
 GSK
 06/02/23