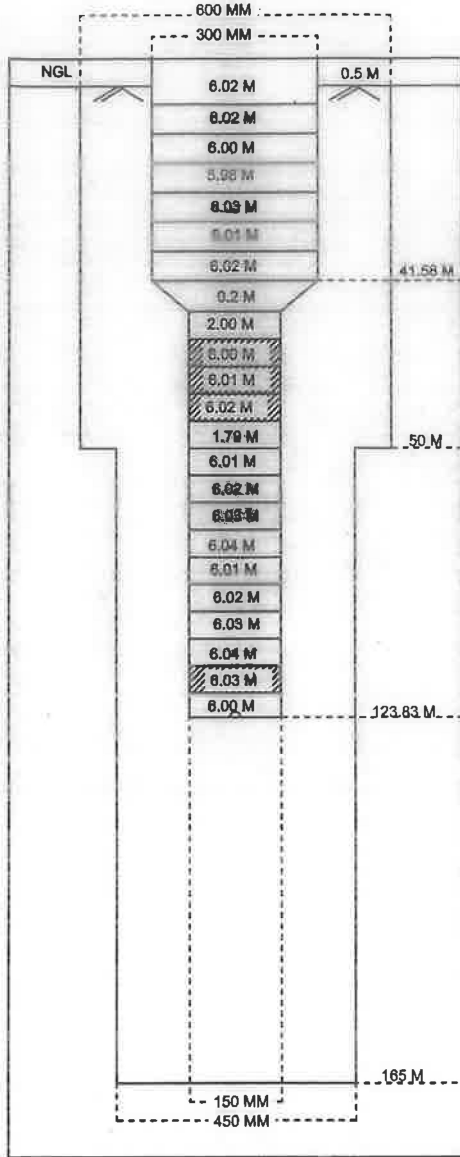


STRATA CHART & ACTUAL ASSEMBLY CHART OF TUBEWELL

NAME OF SCHEME BARABANKI WSS
 NAME OF SITE KARAUNDI
 NAME OF COMPANY M/S SHIV DRILLERS

BLOCK
 DISTRICT

FATEHPUR
 BARABANKI






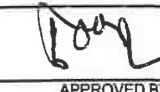
DATE OF LOGGING: 22.02.2023

DRILLING DEPTH: 165.00 M

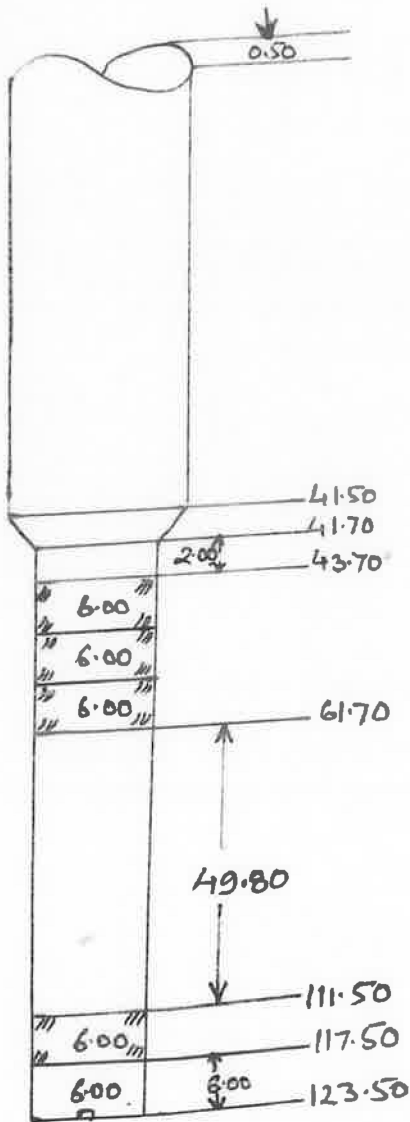
Sl. No.	Depth		Thickness (m)	Inferred lithology	Remark(Quality of Aquifer)
	From (m)	To (m)			
1	0	10	10	Top Soil	
2	10	23.5	13.5	Fine grain sand	Medium
3	23.5	33	9.5	medium to fine grain sand	Good
4	33	40	7	Clay	
5	40	62	22	medium to fine grain sand	Good
6	62	71.5	9.5	Clay with sand	
7	71.5	118.5	47	Fine grain sand	Medium
8	118.5	125.5	7	Clay with sand	
9	125.5	139	13.5	Fine grain sand	Medium
10	139	146.5	7.5	Clay with sand	
11	146.5	159	12.5	Fine grain sand	Medium

SL.NO	DESCRIPTION	METER	REMARKS
1	300 MM PLAIN PIPE	42.08	
2	REDUCER	0.2	
3	150 MM PLAIN PIPE	57.99	
4	150 MM SLOTTED PIPE	24.06	
5	B.G.L	123.83	
6	A.G.L	0.5	
	TOTAL	124.33	



 Prepared by M/S SHIV DRILLERS	 CHECKED BY JR. ENGINEER	 RECOMMENDED BY ASST. ENGINEER	 APPROVED BY EXECUTIVE ENGINEER
---	---	--	--

Proposed TW Assembly chart of Karaundi w/s scheme block Fatehpur Dist.
Barabanki

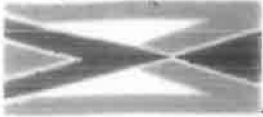


1. Discharge 710 LPM
2. Motor HP = 12.5 HP
3. Assembly size 300 x 150 mm
4. Bore ϕ = 600 x 450 mm
5. Logging Report dt. 22-2-23

- 1- 0-10 = Top soil
- 2- 10-23.5 = 13.5 Fine grain sand
- 3- 23.5-33 = 9.5 Medium to fine
- 4- 33-40 = 7 clay
- ✓ 5- 40-62 = 22 Medium to fine sand
- 6- 62-71.5 = 9.5 Clay with sand
- ✓ 7- 71.5-118.5 = 47 Fine grain sand
- 8- 118.5-125.5 = 7 Clay with sand
- 9- 125.5-139 = 13.5 Fine grain sand
- 10- 139-146.5 = 7.5 Clay with sand
- 11- 146.5-159 = 12.5 Fine grain sand

Gr No-7 conbilder

- 71-78 = 7
- 80-84 = 4
- 6-88-98 = 10
- 102-118 = 16



GEOPHYSICAL DIGITAL LOGGING REPORT

SITE:	KARAUNDI	DATE OF LOGGING:	22.02.2023
BLOCK:	BFATEHPUR	DRILLING DEPTH:	165.00 M
STATE:	UTTAR PRADESH	LOGGING DEPTH:	160.61M
ENGG:	ASHOK KUMAR	LOGGING COMPANY:	Mining Associates Pvt. Ltd.
Rm	0.501ohm/m	Rw	0.476ohm/m
DISTRIC	BARABANKI		

AQUIFER:-

The depth zones with high resistivity and relatively low Natural Gamma radioactivity values are referred as Aquifer Zones.

CLAY:-

The depth zones with less resistivity and relatively high Natural Gamma radioactivity values are referred as Clay zones.

NOTE:- These values are only indicative. The thin clay or sand layer does not reveal its actual resistivity value

Sl. No.	Depth		Thickness (m)	Inferred lithology	Remark(Quality of Aquifer Water)
	From (m)	To (m)			
1	0	10	10	Top Soil	
2	10	23.5	13.5	Fine grain sand	Medium
3	23.5	33	9.5	Medium to fine grain sand	Good
4	33	40	7	Clay	
5	40	62	22	Medium to fine grain sand	Good
6	62	71.5	9.5	Clay with sand	
7	71.5	118.5	47	Fine grain sand	Medium
8	118.5	125.5	7	Clay with sand	
9	125.5	139	13.5	Fine grain sand	Medium
10	139	146.5	7.5	Clay with sand	
11	146.5	159	12.5	Fine grain sand	Medium

NOTE:-

ALL zones has intermixed with thin band of kankar

For Mining Associates Pvt. Ltd.

Ashok Kumar
Geophysicist

Verified as per
logs provided.

Note - Sr No 7 -
71-78 (7m)
80-84 (4m)

88-98 (10m)
102-118 (16m)
- Groundwater quality
interpreted by firm
as per their loggers
or per calibration

G.Sh
23/02/23