



Fig.4 water logging in progress.



Fig 5 Lowering in progress.



ELECTRIC LOGGING REPORT

ML Gupta, M.Sc. (Geophysics)
(Ex-Dy Director, HSMITC)

8800225625
8901332878

Date 10.6.23

Bore site GORIPUR HABIPUR

Borehole drilling depth-----140M

Bore logged depth -----127M

Electric logger used -----Continuous recording - IGIS make

Parameters recorded -----S.P.

Short normal 16''

Long Normal 64'

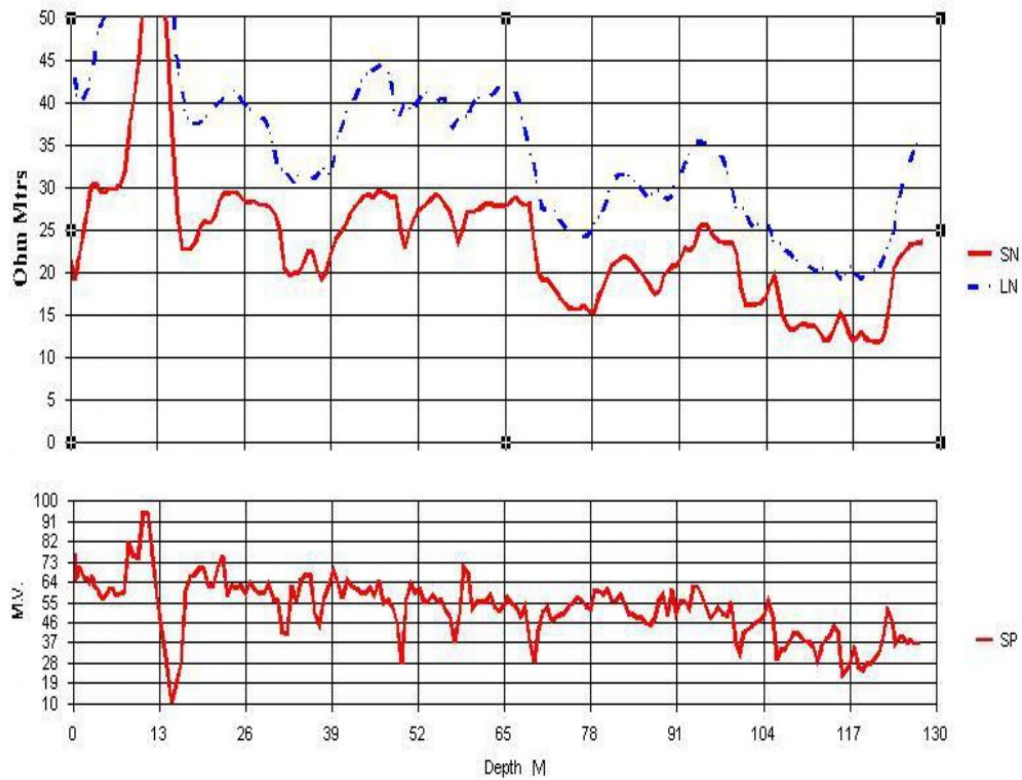
Logging date ----- 10.6.23

LITHOLOGICAL UNITS AT SITE

Depth(m)	Formation	Quality
0-3	Top soil –sandy clay	
3-13	Medium/coarse sand	
13-19	clay + kankar	
19-31	Medium sand	Fresh
31-38	Clay	
38-68	Medium sand	Fresh
68-78	Clay	
78-84	Clayey sand	
90-99	Medium sand	Fresh
99-122	Clay	
122-127	Medium sand	Fresh
127-140	Clay	

Water quality is likely to be fresh at site.

Fig 6 Water logging Report



Well ID GORIPUR2301

Date 6/10/2023 9:56:18 AM

4

Fig 7 Logging Graph



IPUR HABIBPUR (BAGHPAT) :-

8-68 → M.Sand =

(350 LPM)

9-99 → N.Sand = 69 MTR = 6 MTL

122-127 → M.Sand = 4 MTL

200 → 60 MTR

150 → 40 MTR

90.50 + 150 → 24 MTR

124 MTR

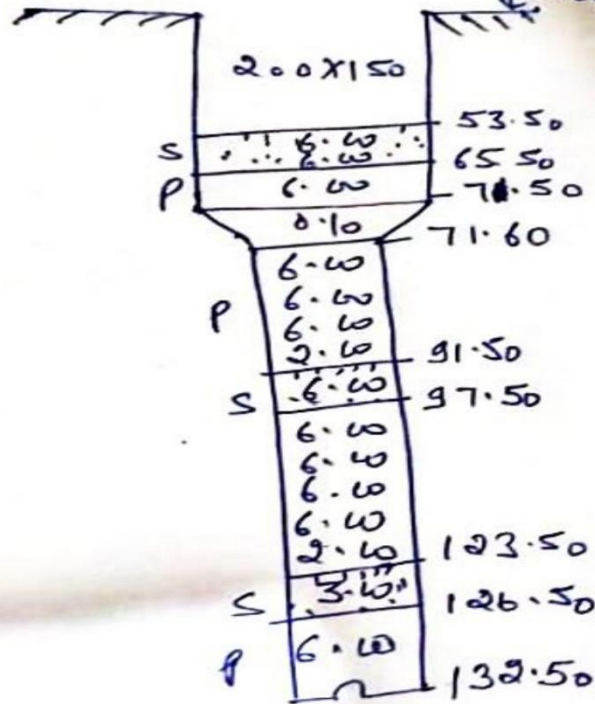


Fig 8 Strata chart