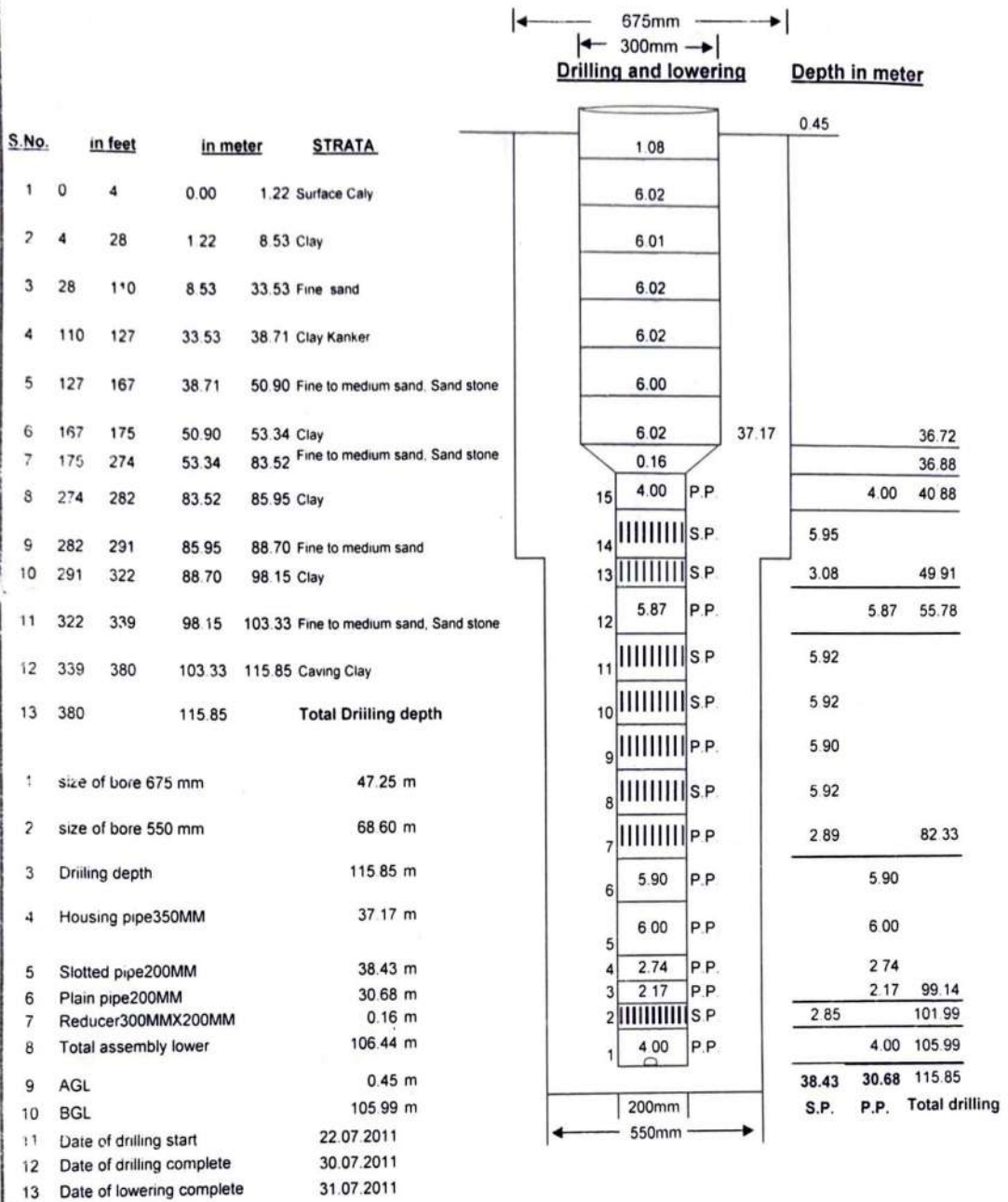


OFFICE OF THE EXECUTIVE ENGINEER, CONST. DIVISION (E/M), U.P. JAL

NIGAM, BAREILLY.

COMPLITION PLAN OF RAMJANPUR TUBEWELL (NEAR IDGAH.) 300MMX200MM SIZE DIST. BADAUN UNDER : NRWSP.

AGENCY: DEPARTMENTAL BY: RC RIG MACHINE 600/27



YIELD TEST OF TW BY 250 PSI COMPRESSOR

Date of Test		23.08.2011		S.W.L.		9.50 m		SAND CONTANTS IN P.P.M					Remark
Sl. No.	Starting pressure in Kg/Cm ²	Running pressure in Kg/Cm ²	Depression in meter	Discharge by V notch in		Starting Min.	5 min	10 min	15 min	20 min	2500	2000	
				Inch	L.P.M.								
1	9.5	9.0	5.00	8.5	1814	5000	4000	3000	2500	2000			

YIELD TEST OF TW BY 2 CUSEC O.P. UNIT

Static W/L		9.50 m		Taste of water Sweet		Date of Test		14.10.2011											
Sounding of T.W. before development					102.80 m					Sounding of T.W. after development					102.10 m				
S. No.	Discharge		SWL in Mts	RWL in Mts	Depression in Mts	SAND CONTENTS IN P.P.M.						Recommendation							
	in inch	L.P.M				Starting Min.	5 Min.	10 Min.	15 Min.	20 Min.	25 Min.		30 Min.						
1	9.5	2385	9.50	14.50	5.00	600	300	100	Tr	Tr	Tr	Cl	Recommended discharge is 1800 l.p.m. at 4.10Mtr. depression.						
2	9.0	2033	9.50	14.00	4.50	300	Tr	Tr	Tr	Tr	Cl	Cl							
3	8.5	1814	9.50	13.60	4.10	Tr	Cl	Cl	Cl	Cl	Cl	Cl							

Checked BY

[Signature]
Computer

Lowered By

[Signature]
(N.C. Shankhar)
J.E.

Developed By Comp. & O.P. Unit

[Signature] *[Signature]*
(H.S. Arya) (Rakesh Maurya)
J.E.

[Signature]
A.E.

(S.P. Singh)
Ex. Engineer