

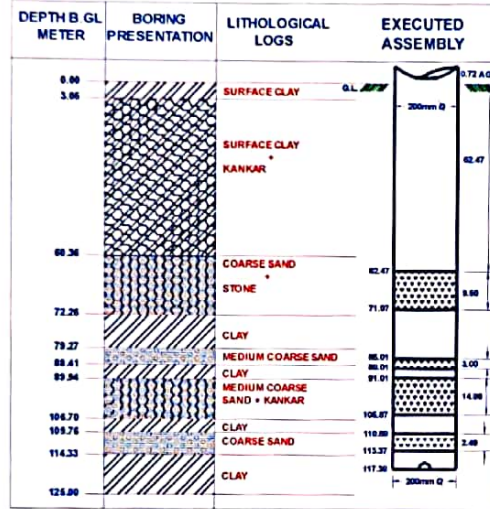
**OFFICE OF THE EXECUTIVE ENGINEER
JAL NIGAM YANTRIK KHAND
U.P. JAL NIGAM MEERUT**

COMPLETION PLAN OF TUBEWELL

(YEAR - 2012-2013)

NAME OF SCHEME - MOHAMMADPUR GUJAR W/S/S DISTT. SAHARANPUR.
TOTAL NO. OF TUBE WELL PROVIDED IN THE SCHEME - 1 NO.
LOCATION OF TUBE WELL - MANDIR CAMPUS.
NAME OF CONTRACTOR - M/S PIONEER DRILLING CO. (P) LTD. GZB.

SPRING WATER LEVEL IN. MTRS - 17.25 M
SIZE OF BORE - 600 MM.
DATE OF COMPLETION OF T.W. - 18.07.2012



ABSTRACT	
1. DRILLING STARTED ON	02.06.2012
2. DRILLING COMPLETED ON	07.06.2011
3. LOWERING ON	10.06.2012
4. DRILLING DEPTH	125.00 M
5. 300 MM DIA HOUSING PIPE	—
6. 300 X200 MM DIA REDUCER	—
7. 200 MM DIA BLIND PIPE	88.25 M
8. 200 MM DIA SLOTTED PIPE	29.85 M
9. DISCHARGE BY COMPRESSOR	500 L.P.M
10. DISCHARGE BY O.P. UNIT	800 L.P.M
11. REMARK IF ANY:-	

YIELD TEST OF T/W BY COMPRESSOR

DATE OF TEST - 09.07.2012 STATIC W/L - 17.00 M TASTE OF WATER . SWEET

DISCHARGE BY V.NOTCH		SAND CONTENTS IN PPM						REMARKS
Height Of Water	Discharge in Lpm	starting	After 5 min	After 10 min	After 15 min	After 30 min	After 60min	
15"	750	1500	800	500	400	50	Tr.	

YIELD TEST OF T/W BY O.P UNIT

(As Per IS - 2800)

DATE OF TEST - 18.07.2012 STATIC W/L - 17.00 M TASTE OF WATER - SWEET

ORIFICE TUBE HEIGHT IN INCH.	DISCHARGE IN L.P.M	SWL IN Mts.	RWL IN Mts.	DEPRESSION IN L.P.M	STARTING	SAND CONTENTS IN P.P.M					RECOMMENDATIONS.
						After 5 MIN	After 10 MIN	After 15 MIN	After 20 MIN	After 30 MIN	
11"	814	17.00	21.25	4.25	Tr.	CL	CL	CL	CL	CL	Recommended discharge 800LPM at 4.25M depression. Pump should be run in bypass for 5 minutes before supply of water in rising main.
16"	1027	17.00	21.50	4.50	100	50	CL	CL	CL	CL	
25"	1201	17.00	21.90	4.90	150	100	Tr.	CL	CL	CL	
30"	1311	17.00	22.20	5.20	200	100	50	Tr.	CL	CL	
40"	1519	17.00	22.35	5.35	400	300	150	100	50	CL	

CHEMICAL TEST REPORT

(As Per IS - 10500)

DATE OF TEST - 25.07.2012

AGENCY - EE 1st DIV U.P. Jal Nigam Mt.

S. NO	SUBSTANCE OR CHARACTERISTIC	LIMIT			S. NO	SUBSTANCE OR CHARACTERISTIC	LIMIT		
		DESIRABLE	MAX.	ACTUAL			DESIRABLE	MAX.	ACTUAL
1	Colour Hazen Unit	5	25	—	9	Dissolved solids mg/L	500	2000	240
2	Turbidity NTU	5	10	—	10	Calcium as(Ca) mg/L	75	200	—
3	PH value	6.5 to 8.5	No Relaxation	7.90	11	Magnesium* as (Mn). mg/L	30	100	—
4	Total Hardness as (CaCO ₃) mg/L	300	600	92	12	Copper as (Cu) mg/L	0.05	1.5	—
5	Iron as (Fe) mg/L	0.3	1.00	0.09	13	Sulphate as (SO ₄) mg/L	200	400	31.00
6	Chlorides as (Cl) mg/L	250	1000	10	14	Nitrate as(NO ₃) mg/L	45	100	4.00
7	Residual Free Chlorine mg/L	0.2	—	—	15	Alkalinity mg/L	200	600	218
8	Fluoride as (F) mg/L	1.0	1.5	0.10					

Note - All dimensions are in metres

J.E

A.E

E.E