

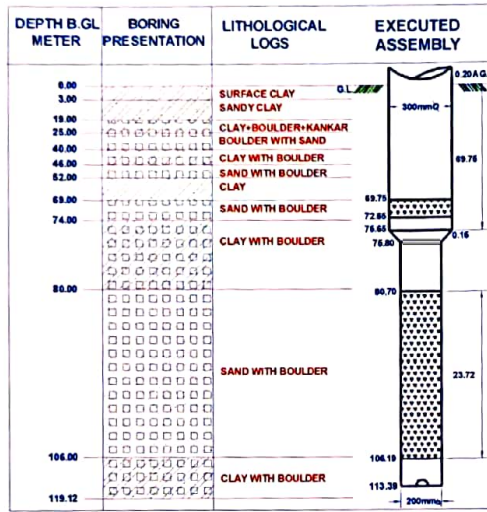


SERIAL.NO.: S/46

**OFFICE OF THE EXECUTIVE ENGINEER
JAL NIGAM YANTRIK KHAND
U.P. JAL NIGAM MEERUT**

**COMPLETION PLAN OF TUBEWELL
(YEAR - 2014-2015)**

NAME OF SCHEME - BADSHAHIBAGH REORG. WS SCHEME DISTT SAHARANPUR. SPRING WATER LEVEL IN. MTRS - 44.00 M
TOTAL NO. OF TUBE WELL PROVIDED IN THE SCHEME - 4 NOS. SIZE OF BORE - 600 X 550 MM.
LOCATION OF TUBE WELL - TW NO.2 FAIZABAD. DATE OF COMPLETION OF T.W. - 25.11.2015
NAME OF CONTRACTOR - M.S.A.S.L. ENTERPRISES MEERUT.



ABSTRACT	
1. DRILLING STARTED ON	20.07.2015
2. DRILLING COMPLETED ON	11.08.2015
3. LOWERING ON	18.08.2015
4. DRILLING DEPTH	119.12 M
5. 300 MM DIA HOUSING PIPE	71.21 M
6. 300X200 MM DIA REDUCER	0.15 M
7. 200 MM DIA BLIND PIPE	8.03 M
8. 200 MM DIA SLOTTED PIPE	24.03 M
9. DISCHARGE BY COMPRESSOR	1140 L.P.M
10. DISCHARGE BY O.P UNIT	1600 L.P.M
11. REMARK IF ANY :-	

YIELD TEST OF TW BY COMPRESSOR

DATE OF TEST - 21.10.2015 STATIC W/L - 43.00 M TASTE OF WATER . SWEET

Height Of Water	Discharge In Lpm	SAND CONTENTS IN PPM						REMARKS
		starting	After 5 min	After 10 min	After 15 min	After 30 min	After 60min	
07"	1140	1000	700	410	200	50	Tr.	

YIELD TEST OF TW BY O.P UNIT

(As Per IS - 2800)

DATE OF TEST - 25.10.2015 STATIC W/L - 42.70 M TASTE OF WATER - SWEET

ORIFICE TUBE HEIGHT IN INCH.	DISCHARGE IN L.P.M	SWL IN Mts.	RWL IN Mts.	DEPRESSION IN L.P.M	STARTING	SAND CONTENTS IN P.P.M					RECOMMENDATIONS.
						After 5 MIN	After 10 MIN	After 15 MIN	After 20 MIN	After 30 MIN	
06"	1435	42.70	44.15	1.45	15	Tr	CL	CL	CL	CL	Recommended discharge 1600LPM at 1.60M. depression. Pump should be run in bypass for 6 minutes before supply of water in rising main.
07"	1550	42.70	44.30	1.60	25	Tr.	CL	CL	CL	CL	
12"	2040	42.70	44.45	1.75	39	20	Tr	Tr	CL	CL	
18"	2495	42.70	44.65	1.95	45	25	15	Tr	CL	CL	
25"	2950	42.70	44.90	2.20	55	30	20	Tr	CL	CL	

CHEMICAL TEST REPORT

(As Per IS - 10500)

DATE OF TEST - 24.11.2016 AGENCY - EE 1st DIV U.P Jal Nigam Mrt.

S. NO	SUBSTANCE OR CHARACTERISTIC	LIMIT			S. NO	SUBSTANCE OR CHARACTERISTIC	LIMIT		
		DESIRABLE	MAX.	ACTUAL			DESIRABLE	MAX.	ACTUAL
1	Colour,Hazen,Unit	5	25	---	9	Dissolved solids mg/L	500	2000	207
2	Turbidity,NTU	5	10	---	10.	Calcium as(Ca) mg/L	75	200	---
3	PH value	6.5 to 8.5	No Relaxation	7.86	11.	Magnesium* as (Mn), mg/L	30	100	---
4	Total Hardness as (CaCO ₃) mg/L	300	600	100	12	Copper as (Cu) mg/L	0.05	1.5	---
5	Iron as (Fe),mg/L	0.3	1.00	0.253	13	Sulphate as (SO ₄) mg/L	200	400	16.70
6	Chlorides as (Cl),mg/L	250	1000	12	14.	Nitrate as(NO ₃) mg/L	45	100	9.74
7	Residual Free Chlorine,mg/L	0.2	---	---	15.	Alkalinity,mg/L	200	600	140
8	Fluoride as (F),mg/L	1.0	1.5	0.159					

Note :- All dimensions are in metres.

J.E

B

E.E

