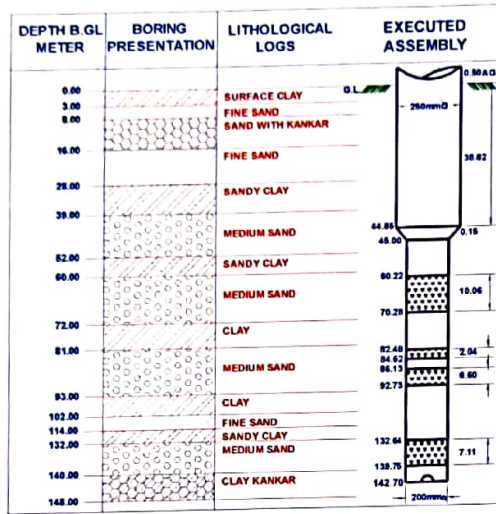




**OFFICE OF THE EXECUTIVE ENGINEER
JAL NIGAM YANTRIK KHAND
U.P. JAL NIGAM MEERUT
COMPLETION PLAN OF TUBEWELL
(YEAR - 2014-2015)**

NAME OF SCHEME - RADAUR W/S SCHEME DISTT. SAHARANPUR.
TOTAL NO. OF TUBE WELL PROVIDED IN THE SCHEME - 1 NO.
LOCATION OF TUBE WELL - NEAR OHT.
NAME OF CONTRACTOR - M/S A.S.L. ENTERPRISES MEERUT.

SPRING WATER LEVEL IN. MTRS - 19.00 M
SIZE OF BORE - 675 X 550 MM.
DATE OF COMPLETION OF T.W. - 17.07.2015



ABSTRACT	
1. DRILLING STARTED ON	08.06.2015
2. DRILLING COMPLETED ON	14.06.2015
3. LOWERING ON	16.06.2015
4. DRILLING DEPTH	148.00 M
5. 250 MM DIA HOUSING PIPE	45.49 M
6. 250X200 MM DIA REDUCER	0.15 M
7. 200 MM DIA BLIND PIPE	71.89 M
8. 200 MM DIA SLOTTED PIPE	25.89 M
9. DISCHARGE BY COMPRESSOR	680 L.P.M
10. DISCHARGE BY O.P UNIT	800 L.P.M
11. PUMPING PLANT :- MAKE - VARUNA DISCHARGE - 750 LPM HEAD - 46 M H.P. - 15 COLUMN PIPES - 100 MM DIA X 30 M	

YIELD TEST OF T/W BY COMPRESSOR

DATE OF TEST - 01.07.2015 STATIC W/L - 18.00 M TASTE OF WATER . SWEET

Height Of Water	Discharge In Lpm	SAND CONTENTS IN PPM						REMARKS
		starting	After 5 min	After 10 min	After 15 min	After 30 min	After 60min	
06"	680	935	575	235	165	50	Tr.	

YIELD TEST OF T/W BY O.P UNIT

(As Per IS - 2800)

DATE OF TEST - 17.07.2015 STATIC W/L - 17.38 M TASTE OF WATER - SWEET

ORIFIE TUBE HEIGHT IN INCH.	DISCHARGE IN L.P.M	SWL IN Mts.	RWL IN Mts.	DEPRESSION IN L.P.M	STARTING	SAND CONTENTS IN P.P.M					RECOMMENDATIONS.
						After 5 MIN	After 10 MIN	After 15 MIN	After 20 MIN	After 30 MIN	
09"	720	17.38	18.83	1.45	15	Tr.	CL	CL	CL	CL	Recommended discharge 800LPM at 1.52Mtr depression. Pump should be run in bypass for 5 minutes before supply of water in rising man.
12"	835	17.38	18.90	1.52	25	Tr.	CL	CL	CL	CL	
18"	1016	17.38	19.09	1.71	30	Tr.	Tr.	Tr.	CL	CL	
25"	1205	17.38	19.31	1.93	40	30	20	Tr.	CL	CL	
35"	1422	17.38	19.53	2.15	50	40	25	Tr.	CL	CL	

CHEMICAL TEST REPORT

(As Per IS - 10500)

DATE OF TEST - 21.07.2015

AGENCY - EE 1st DIV U.P. Jal Nigam Mrt.

S NO	SUBSTANCE OR CHARACTERISTIC	LIMIT			S NO	SUBSTANCE OR CHARACTERISTIC	LIMIT		
		DESIRABLE	MAX.	ACTUAL			DESIRABLE	MAX.	ACTUAL
1	Colour,Hazen,Unit	5	25	---	9	Dissolved solids mg/L	500	2000	332
2	Turbidity,NTU	5	10	---	10	Calcium as(Ca) mg/L	75	200	---
3	PH value	6.5 to 8.5	No Relaxation	7.61	11	Magnesium* as (Mn), mg/L	30	100	---
4	Total Hardness as (CaCO ₃) mg/L	300	600	200	12	Copper as (Cu) mg/L	0.05	1.5	---
5	Iron as (Fe),mg/ L	0.3	1.00	0.038	13	Sulphate as (SO ₄) mg/L	200	400	41.28
6	Chlorides as (Cl),mg/L	250	1000	14	14	Nitrate as(NO ₃) mg/L	45	100	7.53
7	Residual Free Chlorine,mg/L	0.2	---	---	15	Alkalinity,mg/L	200	600	260
8	Fluoride as (F),mg/L	1.0	1.5	0.119					

Note - All dimensions are in metres

J.E

A.E

E.E